

WEATHER

	Min.	Max.	Precip.
Thursday, Jan. 3	12	22	Trace
Friday, Jan. 4	6	22	Trace
Saturday, Jan. 5	14	28	Trace
Sunday, Jan. 6	13	22	0.05
Monday, Jan. 7	17	27	0.01
Tuesday, Jan. 8	19	29	0.17

ONE HUNDRED-FOURTH YEAR—No. 30

12 Pages This Week

CHELSEA, MICHIGAN, THURSDAY, JANUARY 10, 1974

15c per copy

SUBSCRIPTION: \$4.00 PER YEAR

The Chelsea Standard

QUOTE

"The test of our progress is not whether we add more to the abundance of those who have much; it is whether we provide enough for those who have too little."
—Franklin D. Roosevelt.

Cagers Lose To South Lyon In Overtime

Will Host League Leading Milan Friday Evening in Crucial Game

In the barn-burner, cliff-hanger, chiller-thriller division, Chelsea's 71-69 loss last Friday night to South Lyon should rank right up there with the best—or worst—of them all.

The varsity Bulldog squad, which has sweated through more than enough tight games already—two defeats by three and two points, and a victory by one point—were subjected to even more mental and physical distress last week, as a three-minute overtime was required to reach a decision.

The game saw-sawed between the two squads, now boasting identical 3-2 Southeastern Conference seasons and jammed with Brighton in a third-place tie, with continual trading and exchanging of both points and the lead. The lead ranged between two and five points for either team for the entire game.

Late in the final quarter, the

Bulldogs were up by five and held their tenuous edge until two minutes remained on the clock. Then a missed bucket that could have clinched a win began the unfortunate tiddings.

South Lyon responded with a three-point play that edged them even nearer to the local squad. With four seconds to go, what looked like the hot ticket to a victory—a Dave Alber shot originating from an out-of-bounds play—took a heartbreaking twirl in and then out of the basket.

At the final second of the fourth period, Tony Kern's short jumper hit for the Lions and the score at the end of regulation time was even at 65-65.

In overtime, the game continued in a more concentrated see-saw fashion, with Alber hitting for two points. The Lions immediately came back with a bucket to tie.

Then, in what was to be their final opportunity, the Bulldogs missed a basket. When South Lyon came back with a bucket, "that was it," says Coach Tom Balistrere.

"We should have won it," contends Coach Balistrere. "We played well and it was obviously a close game that could have gone either way. But we had the opportunities to win, and we just didn't capitalize on them."

Coach Balistrere praised the efforts of Dave Alber, Tim Treado, Ron Kiel, Rick Miller, Gary Wonders, and Terri Sprague for their hustle in this "really tough loss."

Co-captain Treado, shooting nine for 14, scored 22 points and pulled in 16 rebounds; Alber, going 10 for 19, hit for 20 points and grabbed eight rebounds; Kiel hauled in 15 rebounds and added 10 points; Miller recovered 10 rebounds and scored nine points; Wonders added eight points and assisted on five scoring plays; and Sprague contributed a "nice game with good defense."

Tomorrow night the Bulldogs will meet second-place Milan, presently 4-1 in the SEC, for what Coach Balistrere readily admits is "a big one."



CHELSEA'S 1974 WRESTLING SQUAD lines up after exciting performances in the Parma Western Tournament and against South Lyon. Front row, from left, are Brian McGibney, Dale Schoenberg, Darryl West, John Beeman, Nick Keiser, Jim Stahl, and Doug Reed. Middle row, from left, are Coach Richard Bareis, Rex Miles, Ken Keiser, Dennis Bauer, Dale Poertner, Mike Agopian, John Tandy, and Tim Reed. Back row, from left, are Dave Tucker, Bob Sawyer, Chris Steele, Mark Pennington, David Keiser, Sam Trackett, and Dave Proctor.

March of Dimes Campaign Opens

At one of the March of Dimes question and answer sessions not long ago, someone asked, "What is polio?" It was a question that warmed the hearts of March of Dimes workers.

"It was March of Dimes drives that made that possible," says Mrs. Audrey Bongo, Community chairman for Chelsea's March of Dimes drive this year. "Years ago everyone knew about polio, but with March of Dimes research attempts to prevent, rather than just treat it, polio is now almost unknown."

Now the March of Dimes is aiming its efforts primarily at birth defects. In Washtenaw county, a March of Dimes diagnostic program at the University of Michigan provides genetic counseling, as well as high-risk pregnancy care and a special perinatal unit for high-risk newborns.

March of Dimes has also aided in the meeting of a number of parents of handicapped children to discuss the need for a supportive organization by and for parents of such children, to counsel in their difficulties with coping with their child.

"The counseling program is designed to get people together who have similar problems. Often people try and 'cover up' their child's defect, in attempts to protect the child," Mrs. Bongo says. "The most important thing we can do is to educate people to stop covering up, and to educate them in what birth defects are, how they come about, and what can be done about them."

In addition to the diagnostic program in Washtenaw county, which is available for all county residents, March of Dimes funds aid in the support of the genetic counseling and evaluation center at Michigan State University, the evaluation and nervous system program at Blodgett Memorial Hospital in Grand Rapids, the mobile health unit of the Kent County Health Department in Grand Rapids, and the fetal monitoring equipment at Hackley Hospital in Muskegon.

Similar facilities operate nationwide, including the renowned Salk Institute in San Diego, Calif.

Locally the drive officially began Tuesday evening with the annual kick-off dinner at the Moose Lodge in Ann Arbor. Volunteers were addressed by Dr. Arthur Bloom, assistant professor of human genetics and pediatrics and one of the directors of the diagnostic program at the University of Michigan medical center.

Stress for the evening was primarily on information about the March of Dimes diagnostic program in the past year, and similar research and diagnostic centers funded by the drives.

Next Monday, for Chelsea volunteers, a workshop is scheduled at 7:30 p.m. in the Chelsea High school cafeteria to acquaint workers with March of Dimes goals and projects, and with fellow workers.

A question and answer session will follow the meeting. The entire evening's schedule is open to the public, Mrs. Bongo stresses.

In addition to the familiar mailing procedures, which reach all businesses, merchants, factories, professional workers, and residents, the annual Mothers' March canvassing drive is scheduled for the week of Jan. 21-23. The week-long canvassing period, Mrs. Bongo says, is more convenient for both mothers and patrons, as a single-day drive might prohibit some from either canvassing or donating, if schedule conflicts were to occur.

For the first time this year, Chelsea's March of Dimes drive will participate in the WNRS March of Dimes radio auction on Jan. 26, in which county merchants donate items that are bid upon by phone callers. Last year the auction raised \$1,900.

Other activities include a fashion show at the Ramada Inn on Feb. 2 and the annual Washtenaw county walk-a-thon, planned for April 28. A total of \$11 million was raised nationally by "walkers" last year, Mrs. Bongo notes—and Washtenaw county alone had 700 participants.

This year, three scholarships of \$750 each will be awarded to students. Last year's recipients were Reatha Treado, who is studying nursing at Northern Michigan University, and Diane Klemmer, who is studying pharmacy at the University of Michigan. Applications are available in the high school counselors' offices and must be turned in to Mrs. Jean Galan by March 1.

In Chelsea, canisters should begin to appear in stores within the

Wrestlers Place 3rd In Parma Tourney

Right up there with the Class A schools was the way Chelsea's wrestlers finished last Saturday in the Parma Western Tournament. The Bulldog grapplers placed third behind Jackson and Grand Rapids Ottawa Hills, both Class A entries.

Final standings in Saturday's action saw Jackson in front with 741 points; Grand Rapids Ottawa Hills, 611; Chelsea, 591; Albion, 564; Kalamazoo Portage Central, 53; Tecumseh, 48; Parma Western, 39; Saline, 33; Dearborn, 31; Dexter, 17; Leslie, 8.5; Eaton Rapids, 5.5; Lumen Christi, 0.

Coach Richard Bareis reported that "The competition was even and runners-up honors were hotly contested until the heavyweight finals match."

Honors for Chelsea wrestlers were earned by John Beeman, who took first at 119 pounds; Mike Agopian, who placed first at 126 pounds; Nick Keiser, who hit for second at 105 pounds; Dale Poertner, who took third at 132 pounds; and Dennis Bauer, who managed third at 155 pounds.

Both Beeman and Agopian defeated the number one and number two wrestlers on their ways to winning championships.

Wrestlers Smother South Lyon, 39-15

Another lazy win all but fell into the laps of Chelsea wrestlers Thursday night, when they defeated South Lyon, 39-15. Chelsea grapplers had run the score to 24-0 before the Lions even managed to get on the board.

Match scores included Jim Stahl, posting a 9-1 win; Nick Keiser, at 105 pounds, scored a fall at 1:20; Dale Schoenberg, at 112 pounds, recorded a 12-3 win.

At 119 pounds, John Beeman pinned his opponent at :54. Mike Agopian, wrestling at 125 pounds, won handily by a 6-0 score. At 132 pounds, Bob Sawyer scored a 12-5 win. At 139 pounds, Doug Reed lost a 5-1 decision, while at 145, John Tandy was pinned. At 155 pounds, Darryl West scored a pin at 4:45. At 167 pounds, Dennis Bauer scored a 9-3 decision win. At 185 pounds, Ken Keiser scored a quick pin at :47. At heavyweight, Rex Miles was pinned.

Coach Richard Bareis singled out Nick Keiser and Bob Sawyer for individual praise. "The fast-improving wrestling of Nick Keiser at 105 was outstanding, and Bob Sawyer, who was called in at the last moment to wrestle at 132

(Continued on page three)

Frank Abdons Quietly Observe 72nd Anniversary

There weren't fireworks or big parties, but an important day passed on Tuesday.

It was Jan. 8—and for Frank and Myrtle Abdons, it meant they had been married for 72 years.

The Abdons, 447 Railroad St., were married in 1902 in Greenup, Ky., hometown for both of them where they lived as neighbors. When married, he was 19 and she was 13.

Tuesday their day was quiet, with visits from children, their daughter, Mrs. Floyd Gentner, reported.

The Abdons have six children, 19 grandchildren, and one great-grandchild.

Rick's Market Robbed Friday By 3 Gunmen

Armed robberies are not an everyday occurrence in Chelsea. "I hope it stays that way," is the glum comment of Harold Rickerman.

Rickerman is co-owner of Rick's Market on M-52, north of Chelsea, which was surprised with the unwanted attentions of a trio of bandits who robbed his store of more than \$2,000 early Friday evening.

Rickerman reports that the three entered the store, pretending to be shopping, and then grabbed him at the back of the store and "pistol-whipped" him. He received lacerations on the right side of the head that required five stitches.

Two other employees, a 22-year-old woman and a 15-year-old stock boy, plus three customers, were forced to lie on the floor while the thieves rummaged through the cash register, taking \$2,000 in bills and checks. Another \$134 was taken from Rickerman and \$37 from another man in the store.

A woman who drove into the parking lot while the robbery was taking place saw the men ripping through the cash register and drove to the Chelsea Police Station to alert them.

Sheriff's deputies report that several death threats were made by the men, one of whom carried a .38 caliber revolver. A shotgun found in the rear of the store was emptied on the floor, Rickerman said.

The men left the employees and customers lying on the floor, but the door to the market is such, Rickerman said, that it makes no noise when closing. He estimates that the robbers may have been gone as much as five minutes before the six got off the floor. Rickerman then called the sheriff's department, which arrived shortly after Chelsea police.

A witness to the get-away reports that the men fled in an orange "Cougar-type" car—a Cougar or Mustang or some make resembling it. Although area police set up roadblocks after the incident, no suspects were apprehended.

The car was last seen heading north on M-52.

Rickerman reports that he and his employees have been questioned about the robbery, but apparently the sheriff's department has no suspects as yet.

Police Deal With Two Runaways

Maybe it was a couple of cases of post-Christmas blues, or maybe just a matter of deciding that home was not where the heart was. At any rate, Chelsea police officers had to deal with a couple of youthful runaways this week.

Friday morning, officers say, they received a phone call informing them that a runaway could be found on the exit ramp at I-94 and M-52. Checking out the tip, they found an Ypsilanti 11-year-old who declared that he intended to "run away to California."

The boy said he had gone to bed at home the night before he decided to get up and leave. He walked to I-94 from his home, where he hitched a couple rides, the second with a Chelsea man who took him to his home. He spend the night there, ate breakfast with the family and then his host dropped him at the location where Chelsea officers found him.

Chelsea police called his parents in Ypsilanti, to discover that they had not yet realized he was missing. After investigating his bedroom to make certain the call was on the level, the parents came and picked him up from the police station. His father said he had never attempted to make a California, or any other runaway trip, before.

Another young runaway, this a 14-year-old Chelsea girl, was not so harmoniously reunited with her family. Reported missing to the Washtenaw County Sheriff's Department, (Continued on page three)



SECOND PLACE IN THE LEAGUE with a fine 13-3 record, and right at the heels of first-place Ann Arbor Greenhills, was Chelsea's varsity debate squad. In front are Keith Cockerline and

Dale Koch; in back are Brian Smith, Steve Bennett, and Coach William Coelius. All of the varsity regulars but Koch, a senior, will return for another season of competition.

Varsity Debate Team Places 2nd in State League Competition

It was trophy time for Chelsea High school debaters once again last week when varsity and novice debaters competing in the final state league meet of competition abandoned with an amazing total of nine trophies for both individual and team performances.

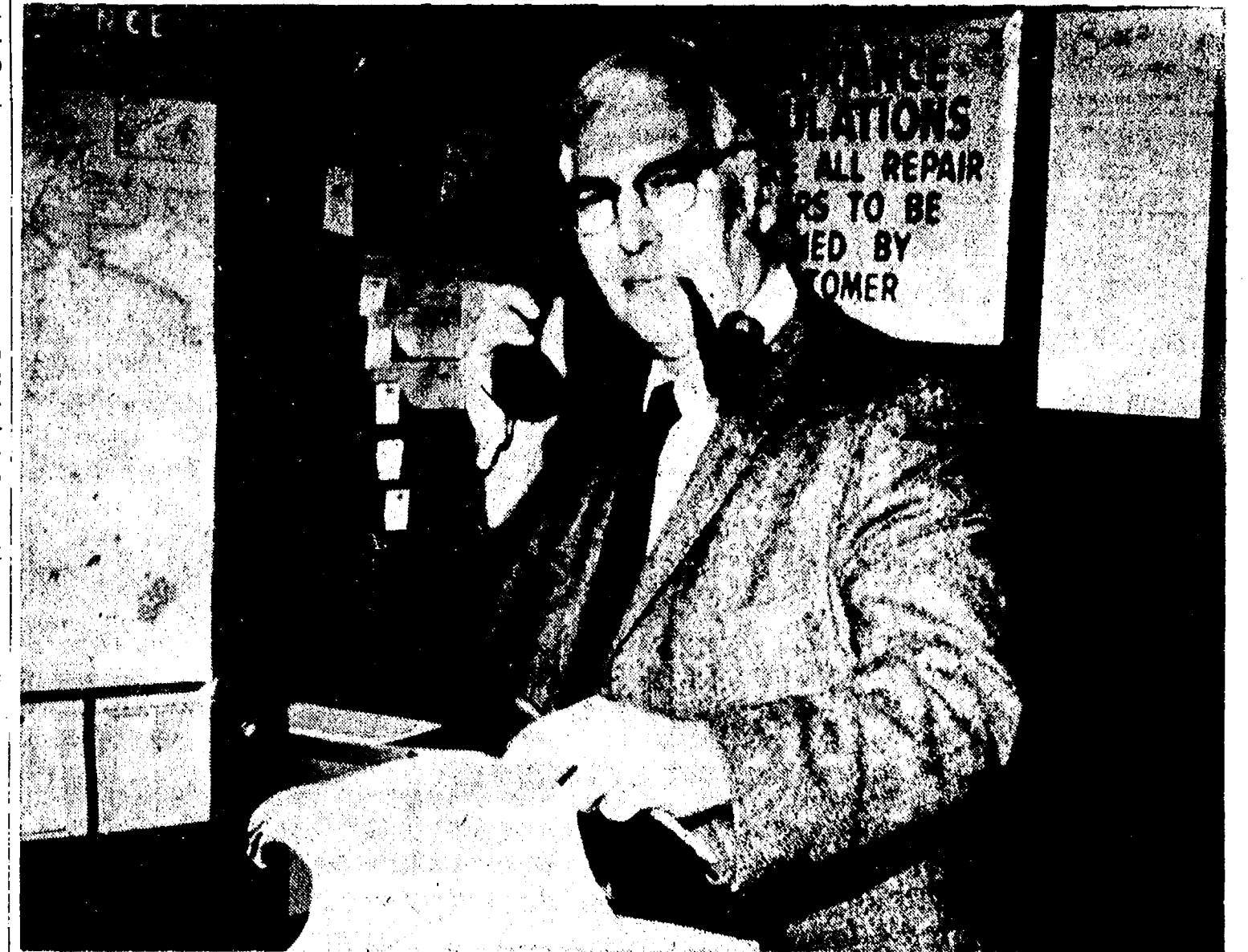
Varsity debaters finished the season in second place behind Ann Arbor Greenhills with a fine 13-3 record.

Coach William Coelius is understandably proud with his squad's

performance and notes that of his varsity debaters, only Koch is a senior and will not return for another rousing year of competition.

Novice debaters recorded an equally commendable performance by finishing the season with a perfect 10-0 mark. Squad members Brad Glazier, Terri Gilbreath, Sharon Schiller, and Kurt Allis-

(Continued on page three)



45 YEARS OF SPAULDINGS in Chevrolet dealerships in Chelsea ended last week with the retirement of Rolly Spaulding from Lloyd Bridges Chevrolet. Spaulding entered the dealership in 1946 in partnership with his father and continued to operate the place until its purchase by Lloyd Bridges in June of 1972.

AFTER 40 YEARS:

Rolly Spaulding Retires From Chevy Dealership

Rolly Spaulding is probably not a man of few words, but he did have few words this week on the occasion of his own retirement.

Assuring people that "this is not another lengthy interview"—in reference to the mammoth interview he conducted last month with Howard Hasel-schwardt about the school bonding proposal—Spaulding reported his own retirement in the briefest of terms.

This week, he said, marks the first time in 45 years that a Spaulding has not been connected with Chevrolet in Chelsea. He started in the dealership 40

years ago, taking over the position formerly held by Graham Sprague, "who moved from washing Chevrolets to a bigger job—washing Buicks."

Tracing his professional career, Spaulding reported he officially became a Chevrolet dealer when he entered into partnership with his father, Harold Spaulding, in 1946. He continued his purchase on June 1, 1972, by Lloyd Bridges.

Since then he has remained associated with the new dealership in "various roles" until his retirement last week. "I've just left a business that

has been a part of my life for a long time," he said. "I'm going to miss the daily association with my friends who have worked for and with me at the dealership, and the serving of the many friends who have been my customers over the years."

"However, this is easier than I expected," he continued, "because I know that the backbone of the dealership—the people—is still the same. Lloyd has hired an experienced service manager, Dave Breckner, who has the attitude and general outlook that I like."

"Incidentally," he added, (Continued on page three)

Legals

NOTICE OF MORTGAGE FORECLOSURE

Default having been made in the conditions of a certain mortgage executed by JOHN H. MATTHEWS and MARY A. MATTHEWS, his wife, to FIRST FEDERAL SAVINGS AND LOAN ASSOCIATION OF DETROIT, a Federal corporation, dated February 19, 1972, and recorded on February 23, 1972, in Liber 1387, Page 776, Washtenaw County Records, on which mortgage there is claimed to be due at the date hereof the following sums, to-wit:

For principal the sum of \$20,799.75
For interest the sum of \$52.38
For taxes and charges in escrow \$29.25
And an attorney's fee as provided by law.

NOTICE IS HEREBY GIVEN that by virtue of the power of sale contained in said mortgage and the statute in such case made and provided, on FRIDAY, MARCH 29, 1974, at 10:00 o'clock in the forenoon, the undersigned will, at the southerly or Huron Street entrance to the Washtenaw County Building, in the City of Ann Arbor, Washtenaw County, Michigan, (that being the building in which the Circuit Court for the County of Washtenaw is held) sell at public auction to the highest bidder the premises described in said mortgage, or so much thereof as may be necessary to pay the aforesaid sums due on said mortgage and any additional sums due thereon at the time of said sale, including interest at the rate of 1% per annum as specified in said mortgage, with all legal costs and said attorney's fee. Said premises are situated in the Township of Ypsilanti, County of Washtenaw, and State of Michigan, and described as:

All of Lot 440, except the North 44 feet and the East 20 feet, also all of Lot 441, except the East 20 feet, of the First Subdivision of the North one-half of the Northeast one-quarter, Section 27, Town 3 South, Range 7 East, Ypsilanti Township, Washtenaw County, Michigan, according to the plat thereof as recorded in Liber 8 of Plats, Page 1, Washtenaw County Records.

The notice of redemption from said sale on foreclosure of said mortgage shall expire six months from and after the date of said sale.

Dated: December 18, 1973.

FIRST FEDERAL SAVINGS AND LOAN ASSOCIATION OF DETROIT
Mortgagee.

Clark, Klein, Winter, Parsons & Prewitt
Attorneys, 1600 First Federal Building
Detroit, Michigan 48226, Dec. 20-Mar. 14

STATE OF MICHIGAN
In the Circuit Court for the County of Washtenaw.

Civil Action
No. 6192
LAND S. E. A CORPORATION, Inc.,
a Michigan Corporation,
Plaintiff,
vs.
ARBOR MANOR, Inc., a Michigan Corporation; and Harold Goldfarb and Wilfred A. Steiner, jointly and severally,
Defendants.

Howell
Livestock Auction
Starts 1 p.m. Every Monday
Mason 677-8941
The Wise Owl Sings To Howell
Phone 546-2470. Bim Franklin

Market Report for Jan. 7

CATTLE
Good to Choice Heifers, \$45 to \$47.25
Good-Choice Heifers, \$45 to \$46.25
Feedlot Heifers, \$35 to \$41.50

COWS
Heifer Cows, \$35 to \$37
Good-Choice Cows, \$35 to \$38
Canter-Cow, \$28 to \$30
Fat Heifer Cows, \$26 to \$28.50

BULLS
Heavy Bologna, \$40 to \$42
Light and Common, \$37 to \$40

CALVES
Prime, \$55 to \$60.50
Good-Choice, \$50 to \$55
Feedlot, \$45 to \$50
Cull & Med., \$35 to \$45

FEEDERS
800-1000 lb. Good to Choice Heifers, \$42 to \$50
400-700 lb. Good to Choice Heifers, \$45 to \$55
200-400 lb. Holstein Steers, \$48 to \$55
500-800 lb. Holstein Steers, \$40 to \$48

SHEEP
Shorn Slaughter Lambs, \$40 to \$48
Good-Utality, \$38 to \$40
Good Slaughter Lambs, \$42 to \$48.25
Good-Utality, \$38 to \$40
Slaughter Lambs, \$42 to \$48
Feeder Lambs, all weights, \$30 to \$36

HOGS
200-250 lb. No. 1, \$41 to \$42.50
200-240 lb. No. 2, \$40 to \$41
240 lb. and up, \$42 to \$46
Light Hogs, \$40 and down.

SOVS
Fancy Light, \$32 to \$34
800-1000 lb., \$32 to \$34
500 lb. and up, \$30 to \$32

Bears and Steers
All Weights, \$20 to \$38
Feeder Pigs:
Fry Head, \$20 to \$32
2nd Cutting, 50c to 75c
2nd Cutting, 75c to \$1.20

STRAW
Per Bale, 50c to 75c

COWS
Tested Dairy Cows, \$400 to \$600
Tested Beef Type Cows, \$300 to \$400

STATE OF MICHIGAN
In the Circuit Court for the County of Washtenaw.

Civil Action
No. 6192
LAND S. E. A CORPORATION, Inc.,
a Michigan Corporation,
Plaintiff,
vs.
ARBOR MANOR, Inc., a Michigan Corporation; and Harold Goldfarb and Wilfred A. Steiner, jointly and severally,
Defendants.

STATE OF MICHIGAN
In the Circuit Court for the County of Washtenaw.

Civil Action
No. 6192
LAND S. E. A CORPORATION, Inc.,
a Michigan Corporation,
Plaintiff,
vs.
ARBOR MANOR, Inc., a Michigan Corporation; and Harold Goldfarb and Wilfred A. Steiner, jointly and severally,
Defendants.

STATE OF MICHIGAN
In the Circuit Court for the County of Washtenaw.

Civil Action
No. 6192
LAND S. E. A CORPORATION, Inc.,
a Michigan Corporation,
Plaintiff,
vs.
ARBOR MANOR, Inc., a Michigan Corporation; and Harold Goldfarb and Wilfred A. Steiner, jointly and severally,
Defendants.

STATE OF MICHIGAN
In the Circuit Court for the County of Washtenaw.

Civil Action
No. 6192
LAND S. E. A CORPORATION, Inc.,
a Michigan Corporation,
Plaintiff,
vs.
ARBOR MANOR, Inc., a Michigan Corporation; and Harold Goldfarb and Wilfred A. Steiner, jointly and severally,
Defendants.

STATE OF MICHIGAN
In the Circuit Court for the County of Washtenaw.

Civil Action
No. 6192
LAND S. E. A CORPORATION, Inc.,
a Michigan Corporation,
Plaintiff,
vs.
ARBOR MANOR, Inc., a Michigan Corporation; and Harold Goldfarb and Wilfred A. Steiner, jointly and severally,
Defendants.

STATE OF MICHIGAN
In the Circuit Court for the County of Washtenaw.

Civil Action
No. 6192
LAND S. E. A CORPORATION, Inc.,
a Michigan Corporation,
Plaintiff,
vs.
ARBOR MANOR, Inc., a Michigan Corporation; and Harold Goldfarb and Wilfred A. Steiner, jointly and severally,
Defendants.

STATE OF MICHIGAN
In the Circuit Court for the County of Washtenaw.

Civil Action
No. 6192
LAND S. E. A CORPORATION, Inc.,
a Michigan Corporation,
Plaintiff,
vs.
ARBOR MANOR, Inc., a Michigan Corporation; and Harold Goldfarb and Wilfred A. Steiner, jointly and severally,
Defendants.

STATE OF MICHIGAN
In the Circuit Court for the County of Washtenaw.

Civil Action
No. 6192
LAND S. E. A CORPORATION, Inc.,
a Michigan Corporation,
Plaintiff,
vs.
ARBOR MANOR, Inc., a Michigan Corporation; and Harold Goldfarb and Wilfred A. Steiner, jointly and severally,
Defendants.

STATE OF MICHIGAN
In the Circuit Court for the County of Washtenaw.

Civil Action
No. 6192
LAND S. E. A CORPORATION, Inc.,
a Michigan Corporation,
Plaintiff,
vs.
ARBOR MANOR, Inc., a Michigan Corporation; and Harold Goldfarb and Wilfred A. Steiner, jointly and severally,
Defendants.

STATE OF MICHIGAN
In the Circuit Court for the County of Washtenaw.

Civil Action
No. 6192
LAND S. E. A CORPORATION, Inc.,
a Michigan Corporation,
Plaintiff,
vs.
ARBOR MANOR, Inc., a Michigan Corporation; and Harold Goldfarb and Wilfred A. Steiner, jointly and severally,
Defendants.

STATE OF MICHIGAN
In the Circuit Court for the County of Washtenaw.

Civil Action
No. 6192
LAND S. E. A CORPORATION, Inc.,
a Michigan Corporation,
Plaintiff,
vs.
ARBOR MANOR, Inc., a Michigan Corporation; and Harold Goldfarb and Wilfred A. Steiner, jointly and severally,
Defendants.

STATE OF MICHIGAN
In the Circuit Court for the County of Washtenaw.

Civil Action
No. 6192
LAND S. E. A CORPORATION, Inc.,
a Michigan Corporation,
Plaintiff,
vs.
ARBOR MANOR, Inc., a Michigan Corporation; and Harold Goldfarb and Wilfred A. Steiner, jointly and severally,
Defendants.

STATE OF MICHIGAN
In the Circuit Court for the County of Washtenaw.

Civil Action
No. 6192
LAND S. E. A CORPORATION, Inc.,
a Michigan Corporation,
Plaintiff,
vs.
ARBOR MANOR, Inc., a Michigan Corporation; and Harold Goldfarb and Wilfred A. Steiner, jointly and severally,
Defendants.

STATE OF MICHIGAN
In the Circuit Court for the County of Washtenaw.

Civil Action
No. 6192
LAND S. E. A CORPORATION, Inc.,
a Michigan Corporation,
Plaintiff,
vs.
ARBOR MANOR, Inc., a Michigan Corporation; and Harold Goldfarb and Wilfred A. Steiner, jointly and severally,
Defendants.

STATE OF MICHIGAN
In the Circuit Court for the County of Washtenaw.

Civil Action
No. 6192
LAND S. E. A CORPORATION, Inc.,
a Michigan Corporation,
Plaintiff,
vs.
ARBOR MANOR, Inc., a Michigan Corporation; and Harold Goldfarb and Wilfred A. Steiner, jointly and severally,
Defendants.

STATE OF MICHIGAN
In the Circuit Court for the County of Washtenaw.

Civil Action
No. 6192
LAND S. E. A CORPORATION, Inc.,
a Michigan Corporation,
Plaintiff,
vs.
ARBOR MANOR, Inc., a Michigan Corporation; and Harold Goldfarb and Wilfred A. Steiner, jointly and severally,
Defendants.

STATE OF MICHIGAN
In the Circuit Court for the County of Washtenaw.

Civil Action
No. 6192
LAND S. E. A CORPORATION, Inc.,
a Michigan Corporation,
Plaintiff,
vs.
ARBOR MANOR, Inc., a Michigan Corporation; and Harold Goldfarb and Wilfred A. Steiner, jointly and severally,
Defendants.

STATE OF MICHIGAN
In the Circuit Court for the County of Washtenaw.

Civil Action
No. 6192
LAND S. E. A CORPORATION, Inc.,
a Michigan Corporation,
Plaintiff,
vs.
ARBOR MANOR, Inc., a Michigan Corporation; and Harold Goldfarb and Wilfred A. Steiner, jointly and severally,
Defendants.

STATE OF MICHIGAN
In the Circuit Court for the County of Washtenaw.

Civil Action
No. 6192
LAND S. E. A CORPORATION, Inc.,
a Michigan Corporation,
Plaintiff,
vs.
ARBOR MANOR, Inc., a Michigan Corporation; and Harold Goldfarb and Wilfred A. Steiner, jointly and severally,
Defendants.

STATE OF MICHIGAN
In the Circuit Court for the County of Washtenaw.

Civil Action
No. 6192
LAND S. E. A CORPORATION, Inc.,
a Michigan Corporation,
Plaintiff,
vs.
ARBOR MANOR, Inc., a Michigan Corporation; and Harold Goldfarb and Wilfred A. Steiner, jointly and severally,
Defendants.

STATE OF MICHIGAN
In the Circuit Court for the County of Washtenaw.

Civil Action
No. 6192
LAND S. E. A CORPORATION, Inc.,
a Michigan Corporation,
Plaintiff,
vs.
ARBOR MANOR, Inc., a Michigan Corporation; and Harold Goldfarb and Wilfred A. Steiner, jointly and severally,
Defendants.

STATE OF MICHIGAN
In the Circuit Court for the County of Washtenaw.

Civil Action
No. 6192
LAND S. E. A CORPORATION, Inc.,
a Michigan Corporation,
Plaintiff,
vs.
ARBOR MANOR, Inc., a Michigan Corporation; and Harold Goldfarb and Wilfred A. Steiner, jointly and severally,
Defendants.

STATE OF MICHIGAN
In the Circuit Court for the County of Washtenaw.

Civil Action
No. 6192
LAND S. E. A CORPORATION, Inc.,
a Michigan Corporation,
Plaintiff,
vs.
ARBOR MANOR, Inc., a Michigan Corporation; and Harold Goldfarb and Wilfred A. Steiner, jointly and severally,
Defendants.

DAWNING OF THE AGE OF EQUINUS?



★ MICHIGAN MIRROR ★

By Elmer E. White, Secretary, Michigan Press Association

Ask for Warning
Michigan farmers want fair warning about what their fuel expectations will be for next year's harvest.

That's one of the major items included in a report to Gov. Milliken from a special task force on the future of agriculture. The report, filed this month by the task force, says that "it is apparent that measures will be taken on a national scale to meet the growing fuel shortage."

The task force urges Milliken to "encourage a careful long-range estimation of the amount of fuel which will be required to meet the nation's food requirements during the coming years."

If at all possible, the task force says, farmers must be advised several months in advance what the fuel availability will be during growing and harvest seasons. The agricultural community must be able to plan production levels and purchase equipment, seed, fertilizer, fuel, etc., in advance of use. Informed planning and purchase capacities are critical to all types of farming.

Incorrect or inadequate information "will cause inadvertent and unintentional mismanagement, financial hardship and can endanger the population's food supply," the report says.

The task force also recommends increased resources for research in the conversion of animal waste to fuel, and that fertilizer priorities be studied and established and allotments be set immediately to allow the farmer time to plan.

A Steady Influence?
Could be the new Senate Democratic floor leader, Jerome Hart of Saginaw, will prove a steady influence on his colleagues, who represent a wide, wide range of viewpoints and pet projects.

Hart, whose bachelor status was proclaimed for some time by a blue plastic "bachelor button" flower in his lapel, will take over the floor leader position this month as the legislature reconvenes after the holiday recess. He was elected by the Senate Democrats to succeed Sen. Coleman Young, who is leaving his post to take on the mayor's job in Detroit.

A mild-mannered, nine-year veteran of the Senate, Hart seldom succumbs to the rhetoric of floor debate. He's been described by one colleague as a "pretty savvy fellow (who) doesn't make anybody mad."

Six Years—or Four More
How about establishing a one-term presidency limited to six years—with a vote of confidence taken after three years?

That's one of the possibilities being considered by the U.S. Senate Select Committee on Presidential Campaign Activities. The committee, which met recently in California with constitutional scholars and former presidential aides, cited several possible government reforms. And a chief consultant to the committee, Arthur Miller, professor law at the National Law Center, says they will be reviewed and may be embodied in the committee report to Congress next year.

Other Ideas put forth were:
choosing a vice-president independently from the top executive office; and enabling a "recall" of a president who has lost public confidence.

Still others may sound familiar to Michigan folks who have been following Gov. Milliken's own proposals for election and campaign finance reform.

They include: mandating shorter campaigns; requiring full disclosure of political contributions and expenditures; and seeking free media time for all political broadcasts.

Help for Youngsters
Michigan may have found a new tool for locating absent parents who are to help support dependent children.

The tool, a bill signed into law recently by Gov. Milliken, would require that birth certificates provide space for social security numbers of the child's mother and father.

The Departments of Public

Health and Social Services seem optimistic about the long-range effects of the legislation.

More About Fuel
If you're planning to carry extra gasoline in your car during week-ends or whenever, heed these words from the director of the Michigan State Police, Col. John R. Plants.

He says containers must be of metal, painted bright red and lettered "gasoline." A limit of six gallons may be carried in a passenger car, says Plants, who is State Fire Marshal. If possible, he suggests, avoid carrying gas in the trunk of the car, however, because escaping vapors can easily ignite.

Free Course in Boating Safety Starts Jan. 16

Ann Arbor Power Squadron will offer a free course in boating safety and small boat handling, beginning Wednesday, Jan. 16. Classes are held in the west cafeteria of Pioneer High School, Ann Arbor. Registration for the class is at 7:30 p.m.

The United States Power Squadrons course is open to both men and women over the age of 16. Ownership of a boat is not required. The course runs for 10 weeks, 2 hours per week. Meeting time is 7:30 p.m. each Wednesday evening. There will be a final examination at the end of the course.

For further information call the course chairman, Robert J. Beuhrer, 761-6732 or 800-243-6000 (toll free).

JUST REMINISCING

Items Taken from the Files of The Chelsea Standard

4 Years Ago...

Thursday, Jan. 8, 1970—

Michigan's Historical Commission has designated a farm owned by Mr. and Mrs. Ernest W. Wenk, 2833 Fletcher Rd., a Centennial Farm. The farm has been in the possession of the family since 1859, when Ignatz and Anna Marie Wenk, grandparents of the present owners, purchased 40 acres of land from Ebenezer Badyen on April 14. The farm today is 130 acres.

The Rev. Thode B. Thodeson, grounds supervisor at Fa-Ho-Li Park, Assemblies of God camp-ground, Grass Lake, has accepted the pastorate of the Chelsea Assembly of God on Old US-12. The Rev. Thodeson has ministered in Michigan since December, 1949, serving as pastor in Glennie, Reed City, Charlevoix, and Ludington.

Chelsea's new extended care unit of the Medical Center will be open for inspection by the public this Sunday. The new 10-bed unit is the second building phase of the Chelsea Medical Center, whose original building was the Chelsea Medical Center Emergency Clinic. Well-balanced scoring by Ron Sweetly, Howie Treddo, Dave Conklin and Wayne Welch led Chelsea to a defeat of South Lyon at home last Friday to turn their league record to 3-2. The Bulldogs are presently tied with Saline for third place in the league.

14 Years Ago...

Thursday, Jan. 14, 1960—

At the afternoon meeting of the annual Institute for General Shop Teachers in Chelsea High School, CHTS students Peter Flintoft and Daniel Mayer explained their drawings and Mayer's scale model of a house he had designed in the problem-solving session.

Stressing first of all the threat to Chelsea because of the prolonged steel strike, Harold Jones, vice-president of Central Fibre Products Co., spoke at the Kiwanis club meeting Monday evening on the strike and its ultimate settlement.

Basketball action scheduled for next Tuesday night will pit Chelsea members against a team from radio station WPAG. The event, sponsored by Chelsea Dads club and the Jaycees, will also feature the Brushless Brothers band members providing their particular style of music during the game. Proceeds are designated for the fund for a new football scoreboard at the athletic field.

Top salesmen for the Chelsea Band Boosters Christmas fruit cake sale, which netted \$300 for the purchase of additional equipment and instruments for Chelsea bands, were Roy Lange, Marvin Fischer, David Blaess, Wendy Gilbert, Carolyn Wilkerson, Marion Marsh, Sandra Jackson, and Cindy Schumm.

24 Years Ago...

Thursday, Jan. 12, 1950—

A picture story of Chelsea's 4,000-acre "mystery project" that revolved around the John Hanna purchase of a 422-acre tract that was formerly the Pierce Farm

south of Chelsea appeared in Sunday's Detroit Free Press. Plans are to develop Old US-12 into a boulevard entrance to Chelsea, with building lots being restricted for residential use.

Four life memberships in the Chelsea Friends of Library—to Mr. and Mrs. Henry Schneider of Chelsea, and Mr. and Mrs. Donald Bacon of Tucson, Ariz.—were announced at the last meeting of the group, in addition to the acceptance of a bookplate to be used in the books given for the Memorial shelf, and eight books for this shelf.

Chelsea's new fire truck had its first try-out under conditions which proved its worth, at the Clarence Trinkle farm fire Sunday evening. Fire Chief Thomas Young and his men reported that the new equipment "worked fine" and fulfilled their expectations.

34 Years Ago...

Thursday, Jan. 11, 1940—

William J. Dancer of Stockbridge, who was made a Master Mason in Olive Lodge No. 156 in February, 1880, will be honored at an anniversary banquet next month. Highlight of the program will be an address by the Grand Master of the Masonic Lodge in Michigan, Dr. Francis B. Lambie. Bettie Carter, five-year-old

daughter of Mr. and Mrs. C. D. Carter of Battle Creek, was thrown from the automobile in which she was riding with her parents Sunday on US-12, cutting a deep gash in her face. The child's parents said that Bettie, sitting alone in the rear seat, opened the door, and the wind caught it, throwing her to the ground.

In the elementary school news, Joanne Shutes brought an account of eclipses and when they will come during the year 1940.

Pub Celebrates 103rd Anniversary

Jack and Chris LeSage, owners of The Pub bar in Chelsea, held a small impromptu party to celebrate the 103rd anniversary of their establishment in Chelsea. The Pub originally opened Jan. 7, 1871 as Frederick Girbach's Saloon. Girbach was an immigrant from Munich, Germany, who once held the post of street commissioner of Ann Arbor, later moving to Chelsea where he opened his saloon.

The business has been open since except of course during prohibition when it remained open as Kolb's restaurant.

Jack and Chris are currently remodeling to give a rustic look to the Pub. They have made major changes to the interior, removed the pool table, and are upgrading the menu, hoping to attract the businessmen and family patrons. They are interested in old artifacts and photos of Chelsea and the surrounding area which might add to the motif.

Snowmobile Safety Class Graduation Scheduled Tonight

Final examinations are scheduled for the final meeting of the snowmobile safety school tonight, Jan. 10, at 7 p.m. at Beach Middle school. Certificates and patches will be awarded to those class members who pass the exam.

A make-up class and make-up exam are scheduled for next Thursday, Jan. 17, for those who missed one night of the class, says Frank Hill of Inverness Snowmobile club.

CHELSEA HEATING CO.

Complete Heating and Air Conditioning Service



- ★ Warm Air Heat
- ★ Hot Water Heat
- ★ Steam Heat
- ★ Humidification
- ★ Furnace and Boiler Cleaning
- ★ Air Conditioning
- ★ Electric Air Cleaning
- ★ Water Heaters
- ★ Gas and Oil Burner Service

475-2419

Why Chiropractors Must Advertise...

When a person becomes ill, he seeks help. And contrasted with other professional services, there is a choice.

People in legal difficulty can only consult a lawyer. Those with toothaches must see a dentist. But a person who is ill has several choices. He may consult:

- A Medical doctor
- A Chiropractic doctor
- or an Osteopathic physician.

The patient chooses the profession he believes can help him the most. This choice depends upon what he was taught as a child and the information and impressions he is exposed to in the world about him.

Newspapers and magazines are filled with reading matter about medicine — either in articles or advertisements by drug companies. Radio and television provide constant exposure to medical themes or medical advertisements. Indeed, one of the most popular programs on TV is the "practice" of "Dr. Marcus Welby M.D."

The media is strangely silent about Chiropractic. Yet the Chiropractic profession — a licensed profession — has a distinct service to offer. It is a drugless service.

Many patients who have suffered needlessly after months and years of medical therapy, have all too frequently discovered that they get well after Chiropractic care has been provided. Chiropractors have heard too many patients ask, "Why didn't I know about this sooner?"

The Chiropractic Doctor has a moral obligation to tell people about Chiropractic — what its principle is and what it has done in clinical cases — for no one else will tell that story. There are no drug companies to sponsor the Chiropractic message. There are no highly paid public relations firms to produce the copy which passes as scientific news — and which gets free space in newspapers.

If a man passes a dangerous deep pit in the road which cannot be easily noticed and which might cause someone to injure himself, he has a moral obligation to issue a warning and to place a barricade about the pit lest an unsuspecting neighbor injure himself. He cannot remain silent and be a moral person.

Since a Chiropractor knows precisely what Chiropractors can do to help many sick and suffering people, he must tell the public about it himself. To remain silent is to be immoral. To allow people to suffer needlessly, or to die because of their lack of knowledge about his science, is unthinkable.

Chiropractors are morally obligated to tell people the truth about Chiropractic — and to describe the contrasts beated only in this way.

Yet when a Chiropractor pays to deliver his healing message, Political Medicine, through its well-paid propagandists, immediately cries "foul," "quack," "unethical practitioner," "fraud!"

The Medical Lobby wants no competition. It wants no one to question its methods, decisions and products. It wants total dominance and dictatorship in the health field.

Without bothering to scientifically prove or disprove the effectiveness of Chiropractic science — which M.D.'s in Western Germany and other nations have proved to their own satisfaction — the American Medical lobby censures Chiropractic merely because it is a different approach.

The Chiropractor is proud to be different. He will continue to be different, and he will continue to tell people about Chiropractic. He has nothing to hide — nothing to be ashamed of.

Chiropractic works. It is backed up by millions of satisfied and grateful Chiropractic patients — most of whom had previously consulted various types of therapists and physicians.

If telling the true story in this way is fraudulent and unethical — then so be it. The Chiropractor will continue in his sincere and conscientious effort to bring an important health message to the public.

CHIROPRACTIC FOR LIFE

7970 Clark Lake Rd. CHIROPRACTIC CENTER PHONE 475-2419

"Come and see our Expansion Program"

INVERNESS INN

Your Innkeepers: Matt and Marge
13996 North Territorial Rd. - North Lake

YOUR FAVORITE MEALS
SHRIMP, CHICKEN & FISH DINNERS

BEER - WINE - LIQUOR - PIZZAS
LUNCHEON SPECIALS

Established 1871 The Chelsea Standard Telephone 475-1371

Excellence Award By Michigan Press Association
1951-1952-1960-1964-1965-1966
Walter P. Leonard, Editor and Publisher

Published every Thursday morning at 800 North Main Street, Chelsea, Mich. 48118, and second class postage paid at Chelsea, Mich., under the Act of March 3, 1879.

Subscription Rates (Payable in Advance)
In Michigan: One Year \$4.00, Six Months \$2.25, Three Months \$1.15
Outside Michigan: One Year \$4.00, Six Months \$2.25, Three Months \$1.15
Single Copies \$1.15

Services men or women, anywhere, 1 year \$4.00

National Association of Chiropractors

For Further Information, call 971-6300, Ext. 263

TOO LATE?

Not for Washtenaw Community College!!

You still have time to register for the

WINTER SEMESTER CLASSES

Late Registration: Tuesday, Jan. 8 through Monday, Jan. 14

Late Registration Fee: \$5.00

Late Registration Hours: Daily-8:30-11:30 a.m., 1:00-4:00 p.m.

Evening Hours: 6:30-8:30 p.m. on

Tuesday, January 8 - Wednesday, January 9

Wrestlers of the Week



DALE POERTNER (left) is a senior co-captain of this year's wrestling squad, wrestling at 134 lbs., who took third in his weight class in the Bulldogs' fine showing in the Parma Western Tournament last week. In addition to wrestling, he has played football and "sometimes track" for Chelsea, and is a member of the senior trip club. After this year, he hopes to attend college—either Northwestern or Michigan State—and major in physical education. For the present, however, he predicts that Coach Bareis' squad "should take the conference." He lives with his parents, Mr. and Mrs. Maynard Poertner, and has two brothers, Larry and Jim, and two sisters, Karen and Pat.

JOHN BEEMAN (right) is the other half of Chelsea's co-captain pair. Last week at the Parma Western Tournament, he turned in a first place in his weight class, 119 lbs., to aid local efforts that landed third place in the tournament. A wrestler for four years, he has also played football and is now Student Council president at the high school. After graduation, he is presently thinking of attending Adrian College to major in physical education and history. His parents are Mr. and Mrs. Donald Beeman, and he has three brothers, Russell, Rick, and Robert, and two sisters, Darlene and Lisa. And, in what sounds like a rehearsed line between co-captains, he, like Poertner, says that Chelsea "should take the conference."

March of Dimes Campaign Opens

(Continued from page one)
next two weeks, and Mrs. Bongo has high hopes for activities like dances or kiddie carnivals to involve young people more in the drive. "It will be their children, too, who will be affected by the gains or lack of gains we make in research about birth defects," she says.

Assisting Mrs. Bongo as chairman are Mrs. Lynn Popovich, directing the Mothers March; Mrs. Gary Roderick, Lyndon township; Mrs. Earl Heller, Sylvan township; Mrs. Gerald Quackenbush, Lima township; and Mrs. Al Cordell, Dexter township. Margaret Tobin is in charge of mailing.

Captains for the Mothers March are Mrs. Judy Fahey, Mrs. Penny

Brown, Mrs. Carol Murphy, Mrs. Sandy Weber, Mrs. Gloria Greenleaf, Mrs. Priscilla Hale, Mrs. Judy Brown, Mrs. Marie Petsch, Mrs. Nadine Koch, and Mrs. Janet Schulte.

Volunteers are always needed, says Mrs. Bongo. With a lot of help maybe, someday, people will have to ask what birth defects are, too.

PERSONALS

Mrs. Thomas Lewis entertained at a luncheon at her home Jan. 3. Guests were Mrs. Pat Russell, Mrs. Mary Howard and son Clayton; Mrs. Barbara Roderick, Mrs. Marta Trueblood, Mrs. Betty Hayden, Mrs. Marianne Meyers, Mrs. Jody Platt, Mrs. Shirley Lancaster, and Mrs. Mary Clark.

Spaulding...

(Continued from page one)
"Dave's opinion of Chelsea has so reversed itself since his days as a member of Ann Arbor High's football team that he is planning to move his wife and three-year-old to town."

Thoughts of the future, he says, haven't taken up too much of his time. A life of leisure would seem to be out of character, however, and he supports that assumption: "I guess I'm going to stay retired for a week or three before adopting a semi-retired role consisting of finding a nice 10-hour-a-day job with more time for family, friends, boy scouting, and community activities."

"Besides," he concluded, "in a few short years Chelsea will be 150 years old, and I'd like to have time to take a more active part in that celebration." So, Rolly Spaulding has retired. But the future seems to be much of the same.

JV Wrestlers Squeak Past South Lyon

In junior varsity wrestling last Thursday against South Lyon, Chelsea squeaked through with a 27-24 victory.

Individual results were: 93 lbs., Rick Haller, lost, 2-0; 105 lbs., Al Dalton, pinned at 3:58; 112 lbs., Bill Shoemaker, lost, 4-7; 119 lbs., Dave Clouse, scored a pin at 3:42; 128 lbs., Bob Swanberg, won, 10-5; 132 lbs., Dale Headrick, won, 4-2; 132 lbs., Mark Pennington, scored a fall, 2:50; 147 lbs., Joe Branham, pinned at 4:12; 152 lbs., Tim Reed, scored a pin, 2:07; 169 lbs., Eric Prinzing, won, 14-6; heavyweight, Bob Bentley, pinned.

JV Cagers Dumped By South Lyon

Although trailing by only two points at the half, Chelsea's junior varsity Bulldogs eventually took it on the chin from the South Lyon junior Lions last Friday night, 82-68.

Only the third quarter, in which Chelsea was outscored, 18-9, kept the tally from being a close one. Score at the half was 42-40, but deteriorated to 58-49 by the end of the third period.

Leading the Junior Bulldog attack was Randy Sween, who hit for 22 points and grabbed 11 rebounds. Randy Davis and Randy Guenther each were good for 12 points, and Davis added 11 rebounds.

Chelsea's over-all record dipped to 5-3 with the defeat. Friday night the junior cagers will take on Milan at home, and then travel to Jackson Northwest, Saturday.

Varsity Debaters

(Continued from page one)
house all received individual speaker trophies in their state league appearances. The team also received the team trophy for their first-place standing.

NOVICE DEBATE Final Standings

	W	L
Chelsea	10	0
Ann Arbor Greenhills	8	2
Saline	7	3
Dexter	1	1
Manchester	0	10

VARSITY DEBATE Final Standings

	W	L
Ann Arbor Greenhills	14	2
Chelsea	13	3
Saline	9	7
Northville	3	13
Howell	1	15

Runaways...

(Continued from page one)
ment last Friday, Chelsea police received a call Monday, apparently from a friend of the girl, that she was staying with friends on W. Middle.

At the house, Chief Meranuck discovered the girl under a bed in the bedroom. Her parents were called, but when her father arrived at the Chelsea Police Station, he refused to take his daughter home with him. Chief Meranuck noted that this is not the first time she had left home.

She was turned over to the custody of Mrs. Davis and Deputy Good of the Washtenaw County Sheriff's Department.

Wrestlers...

(Continued from page one)
pounds, performed very well, just one more indication of the fine depth Chelsea's wrestling team is developing.

The victory moved Chelsea's record to a 6-1 over-all and 3-0 for the league.

The heavy wrestling schedule continues as Chelsea will wrestle at Milan tonight and then will participate in the 32-team Schoolcraft Tournament on Friday and Saturday.

Frosh Cagers...

(Continued from page one)
exchange baskets, pretty much even-steven, with the trailing Lions. Outstanding performances for Chelsea came from Rick Davis with 14 points and 17 rebounds, Anthony Houle with 10 points, Pete Feeney with six points, and Tony Robards with 13 rebounds.

Next game for the freshmen is tonight (Thursday) against Milan.

TV PROGRAM

Did you read about that college football team that finished its season with nine losses, no wins and

38 points scored against them? I heard the coach is starting his own television program and the title of the program is unique: "Where's My Line?"

The Chelsea Standard, Thursday, January 10, 1974 3
FOREIGN FILMS actually embarrassed by it. In fact those new French pictures are I was embarrassed by it the awful. Why I saw one and I was second and third time I saw it.

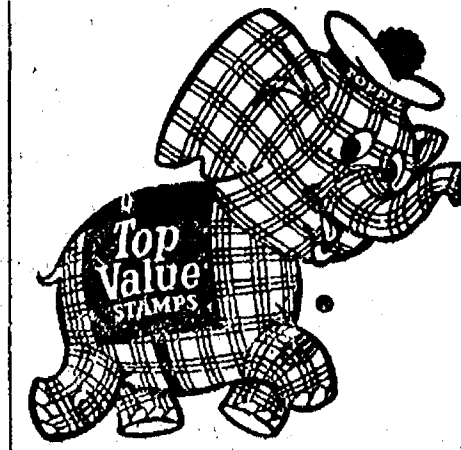
Jiffy market

Big Enough To

Serve You . . . Small Enough To Know You!

TOP VALUE STAMPS •

GUARANTEED SATISFACTION • COURTEOUS SERVICE

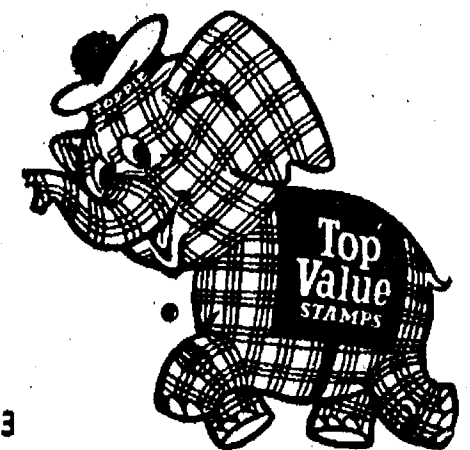


FULL LINE SUPERMARKET

BEER - WINE - LIQUOR
AUTHORIZED
FOOD STAMP STORE
LOTTERY TICKETS
MARATHON GAS PUMPS
2-CYCO GAS PUMPS

Open 7 Days A Week
7 a.m. to 10 p.m.

Corner Sibley & Werkner Rds.
PHONE 475-1701



Sale Prices Effective
Thurs., Jan. 10 thru Sun., Jan. 13

BEEF CHUCK ROAST

U.S.D.A. GRADE CHOICE

BLADE CUT 79c lb.
CENTER CUT 89c lb.
ROUND CUT \$1.09 lb.
ENGLISH CUT \$1.09 lb.



Tender Beef with Flavor!

FARMER PEET'S	MEADOWDALE HICKORY SMOKED	U. S. CHOICE	CAMELOT	CORTLAND VALLEY
PLAYTIME FRANKS 1-Lb. Pkg. 99c	SLICED BACON \$1.09 lb.	RIB STEAK \$1.29 lb.	CHUNK BOLOGNA 89c lb.	SAUERKRAUT 2-Lb. Bag 39c
WHOLE	YOUNG, LEAN TENDER PORK	FRESH PORK	HOME-MADE	
PORK BUTT 4-6 Lb. Avg. 89c lb.	PORK STEAK 99c lb.	PORK BUTT ROAST 99c lb.	NECK BONES 39c lb.	SAUSAGE Reg. or Garlic 99c lb.

COUNTRY FAIR	WHITE BREAD . 2	1-Lb., 4-Oz. Loaves 59c
RISDON'S HOMOGENIZED	LO-FAT MILK	gallon 98c
BIG CHIEF OR PIONEER MICHIGAN	SUGAR	5-Lb. Bag 69c
MAXWELL HOUSE - HILLS OR CHASE & SANBORN	COFFEE	1-Lb. Can 98c
	CIGARETTES	Your Choice Per Carton \$3.49

JIFFY MARKET MARATHON GAS

Sorry for your gas problems. We are doing the best we can with what they give us.

Until Further Notice Our Pumps Will Be Closed Sundays

According to the last cut in quotas, there should be no gas available anyplace the last week in January.

—Gene.

CHELSEA FINANCE CORP.
\$25 to \$1,500
For Any Worthwhile Purpose
See or Call
FRANK HILL
at 475-8631
111 PARK STREET
CHELSEA, MICH.

TOP VALUE STAMPS WE SHARE

Worth 100 EXTRA

This coupon good for 100 Free Top Value Stamps with any purchase at JIFFY MARKET who gives Top Value Stamps. Coupon valid after Jan. 13, 1974

Top Value Stamps
CHELSEA'S JIFFY MARKET FREE COUPON

Mich. State Lottery Tickets - Fresh Meats - Produce - Groceries - Beer - Wine - Liquor

JANUARY CLEARANCE SALE

Save BIG in All Departments

1/3 to 1/2 OFF on many items

Hurry, while the selection and sizes are good!

THE BIG WHITE SALE IS STILL ON
(in the Basement)

DANCER'S
Chelsea's Friendly Dept. Store

★ District Court Proceedings ★

Week of Jan. 2-8
Virgil Allen pled guilty to an amended charge of impaired driving and will be sentenced Feb. 13.
Tom Risner pled guilty to speeding and was fined \$41.
Randy Henson was charged with escape from prison. His preliminary examination was waived and he was bound over to circuit court for arraignment on Jan. 11.
Donald Lahell pled guilty to speeding and was fined \$47.

Thomas Lapp was charged with escape from prison. His preliminary examination was waived and he was bound over to circuit court for arraignment Jan. 11.
Shirley Jefferson pled guilty to an amended charge of impaired driving and will be sentenced Feb. 13.
Debra Carey pled guilty to speeding and was fined \$47.
David Bail pled guilty to driving under the influence of liquor and will be sentenced Feb. 12.

Paul Collins pled guilty to careless driving and was fined \$30.
Leonard Jones pled guilty to driving with a suspended license and his three-day sentence was suspended.
William Lounsbury pled guilty to speeding and was fined \$37.
Ruth Mensons was charged with driving without an operator's permit on her person. The charge was dismissed on \$6 costs.
Ted Luchtz was charged with driving without an operator's permit on his person. The charge was dismissed on \$6 costs.
Larry Carpenter pled guilty to speeding and was fined \$37.
Samuel Short pled guilty to speeding and was fined \$41.
William Levert was charged with driving without an operator's permit on his person. The charge was dismissed on \$6 costs.
Gregory Scherer was charged with driving with defective equipment (no tail light). The charge was dismissed on \$6 costs.
Terry Hadley pled guilty to driving without an operator's permit on his person and was fined \$75 and sentenced to three days on the work program.
Thomas Lashl pled guilty to an amended charge of impaired driving and will be sentenced Feb. 15.

Dennis J. West was found guilty of littering.
Edward A. Darkin was found guilty of driving with a suspended license and was fined \$50 and sentenced to six days in the county jail total, or 20 days in jail total.
Terry Lee Rice pled guilty to speeding and was fined \$23.
Pamela Sue Nelson pled guilty to failure to stop at an assured clear distance and was fined \$21.
Barry Rohde pled guilty to possession of open intoxicants in a motor vehicle and was fined \$25 and sentenced to three days on the work program.
John M. Lewis was sentenced to a 30-day suspended sentence for impaired driving.
Timothy A. Wade was charged with malicious destruction of property valued at less than \$100. The charge was dismissed on \$25 costs.
Bruce M. Guster was charged with malicious destruction of property valued at less than \$100. The charge was dismissed on \$25 costs.
Steven Dorer was charged with malicious destruction of property valued at less than \$100. The charge was dismissed on \$25 costs.
Afredo Perez pled guilty to a charge of drunk and disorderly and was fined \$50.
Thomas Keller pled guilty to driving without an operator's permit on his person and was fined \$36.
Lewis Lin pled guilty to an amended charge of speeding.
Lawrence Yee pled guilty to carrying or transporting firearms without procuring a license and was fined \$25.
Ralph Larkin pled guilty to driving without an operator's permit on his person and was fined \$50.

CORRECTION
Due to a mix-up in information received, The Standard reported last week that Clyde Wheeling, Jr., had pled guilty to shining, paid a fine, and had his gun confiscated. This actually happened in November and had already been reported in the notes from 14th District Court. The Standard regrets that it gave the impression the Wheeling had committed the offense again.

EXPANSION
In home heating, many contractors report being hired to provide facilities for converted breezeways and finished attics in homes that are almost new. A rapidly growing family creates pressure for more living space and consequently more plumbing and heating provisions.

EVER NOTICED?
Have you ever noticed that at many women's club meetings, everyone talks and nobody listens.

Third in Kiwanis Club's Travel Films To Be Shown Saturday

On Saturday evening, Jan. 12, the Chelsea Kiwanis Club will present its third program of the "Travel and Adventure Series" at 8 p.m. in Chelsea High school auditorium.
James W. Metcalf, a native of Michigan will present the film entitled "Angola: A Different Africa." Metcalf was educated to be a chemist. He attended the University of Michigan and earned his way through school in the field of photography. This turned out to be his life's work when, shortly after leaving school, he won a scholarship to the Professional School of Photography at Winona, Ind.
During the war, Metcalf traveled extensively for the Army Ordnance Corps, producing training films. After the war he operated a commercial and portrait studio in Detroit.
Beginning in 1953 he has since produced a series of lecture films on various countries of the Western Hemisphere. He has recently produced educational films for Coronet Instructional Films, Inc., General Electric Co., the Cessna Aircraft Co., the Heddon Bait Co., and Pan-American Airways (LAD).
Recently he has started production of a series of films for Walt Disney Films of Hollywood. They have also published illustrated travel and textbooks for various book publishers, among them Rand - McNally and Doubleday, Inc.

In 1960, Metcalf added a pair of wings to his restless feet, and today flies his own aircraft to his many lecture engagements and filming assignments. He and his family have flown not only the length and breadth of the United States, but also extensively in Canada, Mexico, The Bahamas, and the West Indies.
Angola, or Portuguese West Africa, is the giant of Portugal's provinces, being as large as Portugal, Spain, France and Germany combined. It has a population of only 5 million and a potential of becoming the most commercially important country in Africa, "a different Africa" indeed.
You will see Luanda, the gleaming capital and, for the past several years, the most rapidly building city in Africa, NASA-affiliated tracking station built from scrap metal; Portugal's Independence Day and heroes decorated; Luanda Island, home of the native artists, poets and fishermen; tropical island resort Mussulo; Cam-bambi Dam, one of the great power sources in Africa; Boa Entrada, largest coffee plantation in Africa, and its highly advanced social structure; Duque de Braganza, a misty lacework of waterfalls and the giant black rocks of Pungo Andongo.
Cela, a marvelous achievement in communal farming; Jamba, whose soil is 65 percent iron; Benguela, an old and beautiful town of the fruit belt; Portugalia and a fabulous harvest of diamonds by the half-bushel; Dundo, a native village of mysterious music from "the voice of the hippopotamus"; Cabinda, floating on a sea of oil and home of the finest woodcarvers; Pretty Sa da Bandeira, and the violent geology of the magnificent Tundavala.
Nova Lisboa, bustling manufacturing and agriculture center; Lobito, the great seaport handling three million tons of freight per year and served by a fabulous woodburning trans-African railroad; Mocamedes; marble, caracul pelts and a hunting beautiful desert, home of the curious and rare Welwitschia Mirabilis; and finally... wall-to-wall pictures of giant sable antelope, one of the rarest of animals and found only in Angola!

James W. Metcalf
JAMES W. METCALF

CUB SCOUT NEWS
TROOP 425—
Troop 425 began its meeting on Jan. 7 by talking about the Klondike Derby. We had a vote on it and the vote was yes. Then we made plans for the derby, and practiced first aid. Meeting was closed at 9:45.
Rick Risner, scribe.

DEN 7, PACK 445—
Monday Cub Scouts from Den 7 of Pack 445 went on a scavenger hunt. Daren Pierson and Tim Whitesall won first prize. Tim Whitesall brought treats. We had hot cocoa with marshmallows and cookies. We elected a new denner, Tim Whitesall. We also elected a new assistant denner, Brian Cooper.
Brian Cooper, scribe.

DEN 2, PACK 455—
We met at our Den Mother's house on Wednesday, Jan. 2, and all received a rocket to work on. Everyone told what he got for Christmas. We closed with the living circle. Treats were enjoyed by all.
Rick Eder, scribe.

North Sharon Church
Paris Family Day
For Next Sunday
North Sharon Bible church will sponsor its annual Family Day on Sunday, Jan. 13. Pastor Bill Enslin says that Family Day is an attempt to pull the family together, since so many forces operate in our society to pull it apart.
The church will take the immediate family which has the most members and relatives present out to dinner. The runner-up will receive a gift certificate for a family dinner at McDonald's.
Bus children are urged to bring the entire family on the bus.
The church is located at Sylvan and Washburne Rds.
Telephone Your Club News
To 475-1371

Nine Chelsea Students
Named to MSU
Dean's Honor List
Nine Chelsea natives were among the members of the Dean's Honor Roll list for fall term released recently from Michigan State University. They include Barbara Boylan, Cynthia Chandler, Dorothy Gauss, J.A. Haselschwardt, Jane Haselschwardt, Charles Lane, Anne McKernan, Janice Schenk, and Janet Wasken-hut.
NATIVE
Vanilla is native to Central America and Mexico.

School Board Briefs

Present at the Chelsea Board of Education meeting Jan. 7, were President Haselschwardt, Trustees Stirling, Koenn, Hodgson, Daniels, Irwin, and Schafer, Superintendent Cameron, Business Manager Mills, and Principals Conklin and Wojcik. Also present were George Richards, representing Manson, Jackson & Kane, Architects, of Lansing, Mrs. Guy Russell, and Mr. and Mrs. Clyde Meyers.
Meeting was called to order by President Haselschwardt at 8:10. Minutes of the meeting of Dec. 17 were approved as read.

The "main roads only" bus plan was discussed. Guests spoke to the Board regarding concern for the problem and the main roads only plan. The board adopted the resolution that there be no "main roads only" plan and that past years' snow day (hazardous driving condition days) practice be continued.

The board discussed the problem created by Daylight Savings Time and adopted the following resolution:

That the administration inform parents of children within the Chelsea School District of good safety practices which should be communicated to the district via mailings and The Chelsea Standard. An additional reminder of available bus transportation from North school for 5th graders attending Beach Middle school should be emphasized.

George Richards discussed the building program and the time schedule for approval of the bonds, sale of the bonds, bidding, and construction. The Board of Education authorized the architects to retain firms for site surveys and soil investigation.

The Board of Education approved a recommendation of the citizens ad hoc finance committee to retain the firm of Stauder, Barch & Associates as financial consultants for the district, to file the application with the Municipal Finance Commission, and to prepare the prospectus for sale of the bonds.

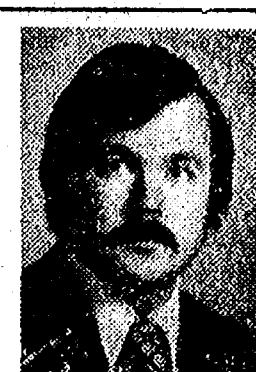
The Board of Education adopted the following resolution:
1) Resolve to apply for final qualification of bonds by the Superintendent of Public Instruction for the purpose of financing the school construction described in this application.
2) Read this application and approved all statements and representatives contained here in as true to the best knowledge and belief of said board.
3) Authorized the secretary of the Board of Education to sign this final application and submit same to the Superintendent of Public Instruction for his review and approval.

The Board of Education adopted the bond resolution as prepared by the law firm of Thrum, Maatch & Nordberg, of Lansing.

PLAY SAFE
When watching calories, be sure to include all the nutrients your body needs. Eliminating, or even skipping on, any of the four food groups is asking for trouble.

VIVIANE WOODARD
COOSMETICS
475-8788
Dorothy Crittling, Director

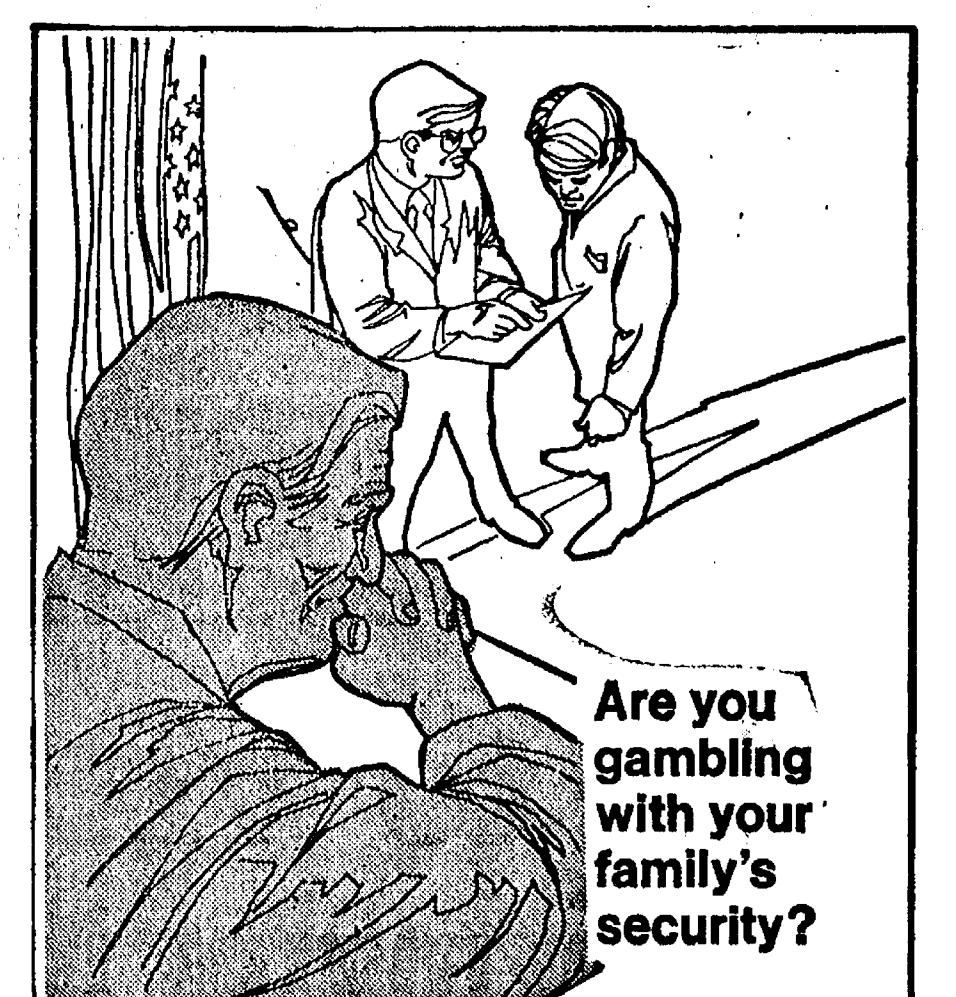
LAND NEEDED!
I have a customer who is anxious to buy a 20-40 acre piece of raw land in western Washington or eastern Jackson County. If you have land for sale... call me personally at
Roni Estate Co.
OF WASHINGTON
REALTORS
1196 M-52, Chelsea 475-8693



BOB MYRMEL
Assistant Manager
EVE, 475-1449

SOUTHERN BOY MANOR
MOTEL
Efficiency Units - By Day, Week, or Month
13190 M-52
(2 miles south of Stockbridge)
PHONE (517) 851-4213

EXTRA GAS!
Custom installed fuel tanks for all makes of pickups, vans and motor homes.
26 to 50 gal. additional fuel tanks installed from \$155.
CALL FOR APPOINTMENT
475-1347
LLOYD BRIDGES
TRAVELAND
M-52 and I-94 - Chelsea



Suppose you were sued for \$500,000... and lost! Would you be able to stay out of bankruptcy? And what would happen to your family security? Suits involving hundreds of thousands of dollars are all too frequently started against businessmen and professionals simply because they are well-known as affluent and successful people! Here's an economical way to avoid such a risk! Our Executive Liability Insurance provides up to \$5,000,000 of protection for you and your family. Call us now. We can probably put all your liability insurance together and even save you some money.

its better
altogether
A. D. MAYER AGENCY, INC.
115 PARK ST., CHELSEA
BOB BARLOW, AGENT
PHONE 475-2030
Auto-Owners Insurance
LifeHomeCarBusiness

CALL OR STOP IN
CHELSEA GLASS WORKS
WORKMANSHIP AND MATERIALS FULLY GUARANTEED.
Open Daily 8 a.m. to 5 p.m.; Sat. 8 a.m. to 1 p.m.
140 W. Middle, Chelsea Phone (313) 475-8667
WE REPAIR AND REPLACE:
★ STORE FRONTS ★ MIRRORS
★ FURNITURE TOPS ★ PATIO DOORS
★ SHOWER DOORS ★ TUB ENCLOSURES
★ THERMOPANES ★
★ AUTO GLASS - Including Windshields
Free Pick-up and delivery on auto work.
Storm Door & Window Reglazing & Screens
COMMERCIAL BUILDINGS OR RESIDENTIAL
PROMPT SERVICE REASONABLE PRICES

NOTICE
Lima Township Taxpayers
I will be at Chelsea State Bank to collect Lima Township taxes on the following Fridays: Dec. 14 - 28, Jan. 11 - 25, Feb. 8 - 22, March 1. Those who wish may send check or money order. Receipt will be returned by mail.
All Dog Licenses must be paid to Lima Township Treasurer before March 1, 1974, to avoid penalty.
ALL DOG LICENSES \$4.00
Rabies Vaccination Papers must be presented in order to obtain dog license.
HILDA PIERCE
LIMA TOWNSHIP TREASURER

NOTICE
Lyndon Township Taxpayers
Lyndon Township Treasurer will be at Chelsea State Bank to collect Lyndon Township taxes Saturday, Feb. 16 and Feb. 23 from 9 a.m. to noon, and on any other day, at my home, 16366 Farnsworth Rd., Stockbridge, Mich., 2 to 5 p.m. only and please, no evening acceptance of taxes or dog licenses. Those who wish may send check or money order by mail. Receipt will be returned by mail.
All Dog Licenses must be paid to Lyndon Township Treasurer on or before March 1, 1974, to avoid penalty.
ALL DOG LICENSES \$4.00
Rabies Vaccination papers must be presented in order to obtain license.
NANCY WHITE
LYNDON TOWNSHIP TREASURER

NOTICE
Sylvan Township Taxpayers
Sylvan Township Treasurer will be at Sylvan Township Hall, 112 W. Middle St., Chelsea, to collect Sylvan Township Taxes every Monday, Wednesday and Friday from 1 to 5 p.m. and Saturdays from 10 a.m. to 3 p.m., until Feb. 28, 1974.
CHECKS WILL BE ACCEPTED BY MAIL
All Dog Licenses must be paid to Sylvan Township Treasurer before March 1, 1974, to avoid penalty.
ALL DOG LICENSES \$4.00
Rabies Vaccination papers must be presented in order to obtain license.
FRED W. PEARSALL
SYLVAN TOWNSHIP TREASURER
Phone 475-8890 or 475-7251

NOTICE
Sylvan Township Taxpayers
Sylvan Township Treasurer will be at Sylvan Township Hall, 112 W. Middle St., Chelsea, to collect Sylvan Township Taxes every Monday, Wednesday and Friday from 1 to 5 p.m. and Saturdays from 10 a.m. to 3 p.m., until Feb. 28, 1974.
CHECKS WILL BE ACCEPTED BY MAIL
All Dog Licenses must be paid to Sylvan Township Treasurer before March 1, 1974, to avoid penalty.
ALL DOG LICENSES \$4.00
Rabies Vaccination papers must be presented in order to obtain license.
FRED W. PEARSALL
SYLVAN TOWNSHIP TREASURER
Phone 475-8890 or 475-7251

NOTICE
Sylvan Township Taxpayers
Sylvan Township Treasurer will be at Sylvan Township Hall, 112 W. Middle St., Chelsea, to collect Sylvan Township Taxes every Monday, Wednesday and Friday from 1 to 5 p.m. and Saturdays from 10 a.m. to 3 p.m., until Feb. 28, 1974.
CHECKS WILL BE ACCEPTED BY MAIL
All Dog Licenses must be paid to Sylvan Township Treasurer before March 1, 1974, to avoid penalty.
ALL DOG LICENSES \$4.00
Rabies Vaccination papers must be presented in order to obtain license.
FRED W. PEARSALL
SYLVAN TOWNSHIP TREASURER
Phone 475-8890 or 475-7251

Mobil-Toons
By GLENN

"Quick! In the back room... turn off the air compressor hurry!"
We give quick service!
GLENN'S
MOBIL SERVICE
1629 M-52 & I-94
CHELSEA, MICHIGAN
Phone 475-1767
GLENN HEIM
PROP.

BARGAINS GALORE!
Visit our 2nd floor
for some very good buys!
25-50% Off
Cash and Carry only
GAR-NETT'S
FLOWER & GIFT SHOP
PHONE 475-1400
112 E. MIDDLE CHELSEA

CYN-CERAMICS
PRE-INVENTORY SALE
15% DISCOUNTS
ON ANYTHING IN STOCK
Call or come before 9 a.m. and after 5 p.m.
CYN-CERAMICS
PHONE 475-2476
1408 SUGAR LOAF LAKE CHELSEA, MICH.



FIVE TROPHIES returned to Chelsea with the novice debate squad, earned by their first-place winning performance in the state league meet last week. All four team members earned individual speaker trophies, and the squad also received the first-place team trophy. They posted a perfect 10-0 record in competition. In front are Sharon Schiller and Terri Gilbreath; in back are Brad Glazier, Kurt Allshouse, and William Coelius, debate coach.

Livermore - Breneman Vows Spoken at North Sharon Church

Jonli Livermore became the bride of Michael Breneman Saturday, Dec. 22, in a candlelight ceremony officiated by Pastor William Enslin at North Sharon Bible church.

Parents of the couple are Mr. and Mrs. John Livermore of Grass Lake, and Mr. and Mrs. Walter Breneman of Pinckney.

Mrs. David Sharlow of Napoleon played piano versions of "Largo" by Handel, "One Hand, One Heart" by Stephen Sondheim, and the theme from "Romeo and Juliet" by Rye.

Mrs. Paul Patrick of Chelsea, Miss Gina Slane, and Delruss Wolfe of Manchester joined to sing "Why Me?"

Organist Mrs. A. B. Craft of Grass Lake played the traditional wedding march.

The bride approached the altar, which was adorned with red poinsettias, on the arm of her father and wearing a floor-length gown of white velvet panne. The dress featured a high neckline, long fitted sleeves with wide lace cuffs with velvet ribbon insets, and demi-bell skirt.

She wore a cathedral-length mantilla, edged in Venice lace, caught to a cap of Venice lace. Complementing her gown, she carried a white velvet muff trimmed with white poinsettias, holly, and velvet ribbon streamers.

Acting as honor attendant for the bride was Miss Bonnie Brown of Dundee. She wore a holly red velvet floor-length gown and carried a white fur muff, accented with red poinsettias, and red velvet streamers.

The bridegroom chose Aaron Livermore, brother of the bride, as his best man. The bridegroom's brother, Jay Breneman, seated the guests.

Honored guests attending the wedding were the bride's maternal grandmother, Mrs. Carlie Wiedman of Dexter, and the paternal grandmother of the bridegroom, Mrs. M. Riley of Ada, O.

For her daughter's wedding, Mrs. Livermore chose a long gown of deep pink crepe. The mother of the bridegroom wore a gown of deep red. Both were presented with a corsage of white orchids by the bridegroom.

After the ceremony, the bridal party greeted guests in the church fellowship hall, followed by the reception and Patrice Livermore of ception. Misses Katherine Ran-Ann Arbor, Yvonne Gosgray and Mrs. Mary Lantis of Chelsea, served refreshments.

The bride is a 1973 graduate of Manchester High school, and is employed in Pinckney; the bridegroom is a graduate of Pinckney High school and has served with the United States Army in the United States and Vietnam.

25th Anniversary

Mr. and Mrs. Joseph Parks, 3475 Jeannette Dr., were honored this week at a party by friends and relatives celebrating their 25th wedding anniversary. They were married Jan. 8, 1949 in Grand Rapids, and have six children: Brenda, Doug, Ann, Bob, Bette Jo, and David.

LYNDON FARM BUREAU

Lyndon Township Farm Bureau discussion group held its monthly meeting Jan. 3 with a pot-luck supper at Lyndon Township Hall.

Chairman William Hogan called the business meeting to order. The usual business was taken care of at this time.

Carl and Lucille Schoonover were representatives at the convention in Grand Rapids. They enjoyed the meetings. They met many friends from around the state, which was worthwhile.

We had four new families join our Farm Bureau discussion group, Floyd and Helen Balmer; Tom and Marilyn Lewis; Betty Messman; and Gary and Barbara Roderick. Next meeting is scheduled for Feb. 2 in the Township Hall.

Bruce Clark Named To Dean's Honor List

Bruce Clark, a 1971 graduate of Chelsea High school and junior at Lake Superior State College, has been named to the dean's list of the school for the past fall term. He is the son of Mr. and Mrs. Stephen Clark, 13334 Noah Rd.

Magic Mirror Beauty Salon

Open Tuesday thru Friday 9 a.m. to 9 p.m.
Saturday, 8 a.m. to 3 p.m.

PHONE 665-0816

STRIETER'S SEMI-ANNUAL SALE

FINE CLOTHING 20%
AT
REDUCTIONS OF 50%

All items for this sale are from our regular stock.

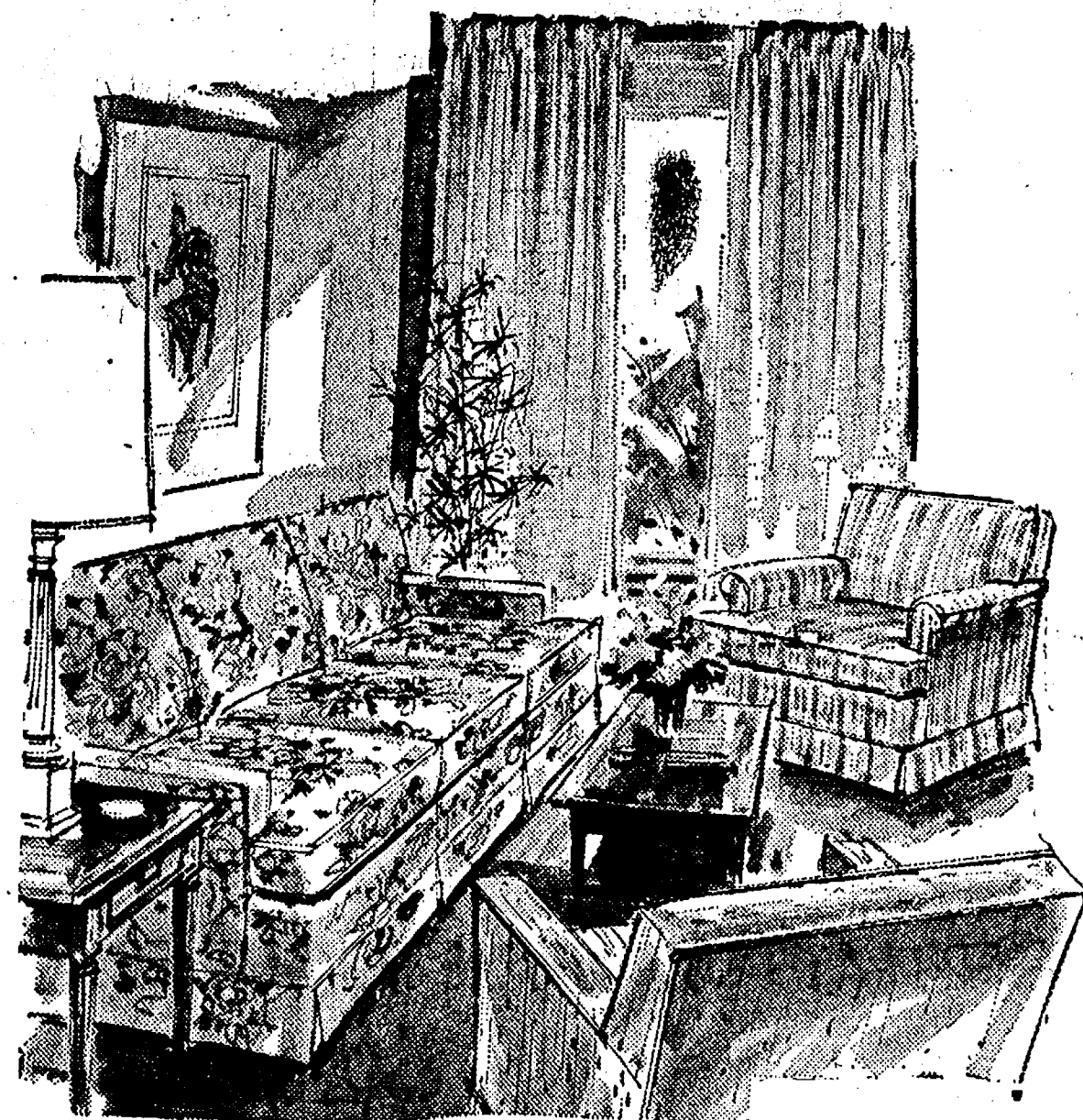
Strieter's Men's Wear

"The Place To Go For Brands You Know"

A Standard Want Ad will get you quick results!

STORE-WIDE WINTER SALE

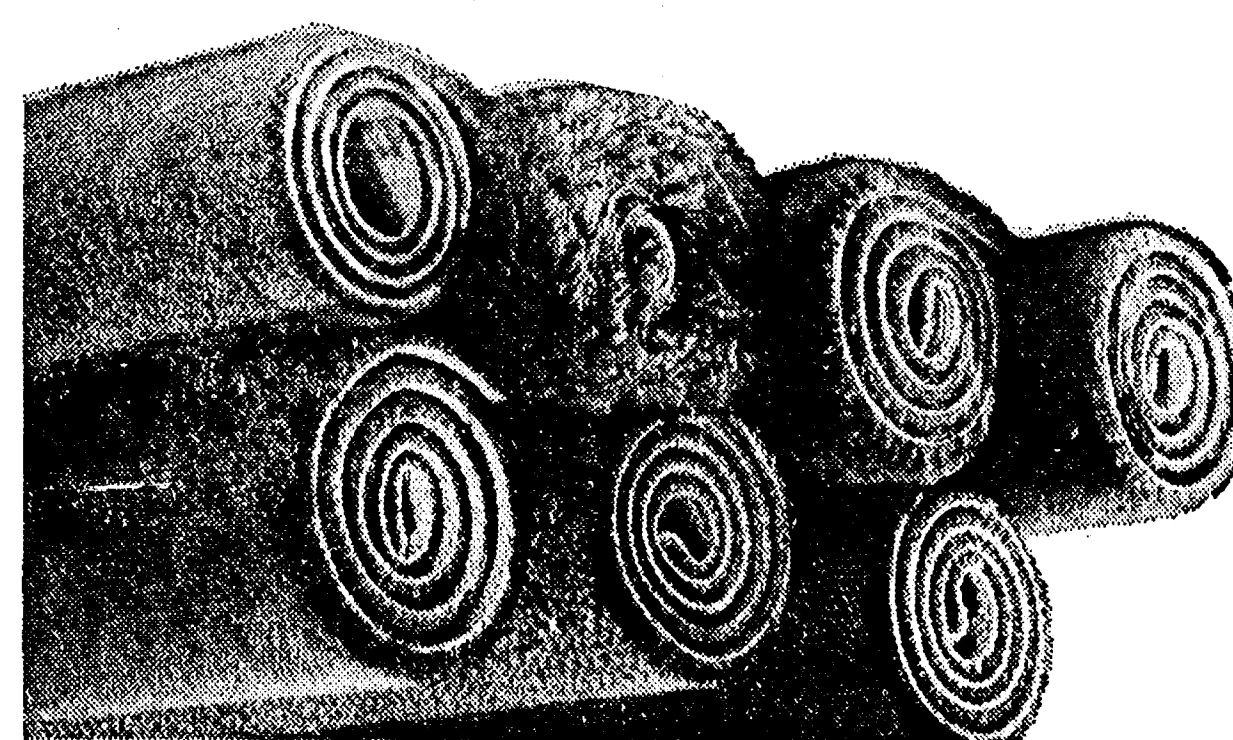
10% to 50% Off on all furniture



Sale Runs from Jan. 4 to Jan. 26

Merkel

FURNITURE and CARPET



CARPET SALE

SAVE 10% on CARPET

SAVE 15% ON PAD

SAVE 20% ... ON INSTALLATION

MERKEL CARPETS

SCHOOL LUNCH MENU

Week of Jan. 14-18

Monday—Casserole dish, buttered vegetable, bread and butter, Jell-O supreme, cookie, and milk.

Tuesday—Ravioli with meat, buttered corn, bread and butter, chocolate tarts with topping, juice, and milk.

Wednesday—Ham on a bun with mustard or dressing, vegetable soup and crackers, apple dessert, and milk.

Thursday—Chop suey over buttered rice, buttered peas, bread and butter, ice cream, cookie, and milk.

Friday—Hamburgers on buns with trimmings, buttered wax beans, French fries, peaches, and milk.

Home Meal Service Needs Volunteer Drivers To Continue Program

Chelsea's Home Meal Service program, which has received "gratifying" response from its plea of several months ago for funds, has encountered another obstacle in its effort to get the food out.

Several volunteer drivers who deliver meals have left the area for the winter. In order to continue the three daily routes, organizers say, the program needs four permanent drivers and several more substitute drivers.

Persons interested in donating one hour a week to Home Meal Service should contact Mrs. Arthur Steinway at 475-2923, or Jerold Knaus, at 475-1686.

Telephone Your Club News To 475-1371

Club and Social Activities

WOMAN'S CLUB

Chelsea Woman's Club met Tuesday, Jan. 8 at Chelsea Community Hospital. Following a brief business meeting, members and guests enjoyed an excellent program presented by Dr. Hawks on "Our Eyes, Their Development and Care."

Through a discussion and slide presentation, Dr. Hawks informed the group of many interesting and important facts concerned with eyes.

Guests for the evening included Mrs. Shirley Schaible, Mrs. Audrey Harris, Mrs. Nancy Barber, Mrs. Mary Jane Lehman, and Mrs. Ruth LaBarbara.

Hostesses were Mrs. Linda Ormsby and Mrs. Pat Scholz.

KINDER KLUB

Kinder Klub members met at the home of Mrs. Mary Messner with Nadine Koch as co-hostess.

Kathy Henderson was made a member of the club. Changes in the constitution were made.

Guests for the evening were Mrs. Wallace and Mrs. Sexton from the Health Department. They showed a movie called, "Teen Scene," on planned parenthood and teen-agers.

Next meeting will be Feb. 12 at the home of Mrs. Edson Whitaker, with Mrs. Laura Downer as co-hostess. Guest speaker at that time be Dr. Jerry Waldyke.

MODERN MOTHERS

Modern Mothers Child Study Club met Tuesday, Jan. 8 at 8 p.m. in the high school cafeteria. The members participated in a "Post-Holiday Shape-Up" led by Terry Schreiner, girls physical education instructor at Chelsea High.

Terry explained the advantages of a daily exercise program and then had the ladies try various exercise routines. Swedish gymnastic exercises were used as warm up.

Following the warm-ups, Terry taught a five to six minute fast exercise routine done to a musical record entitled "Wiggle Wobble." Another twenty-six minutes were spent doing a variety of exercises to music and instructions recorded specifically as "Exercises for Girls."

Twenty-three members and three guests probably awakened the next morning feeling sore muscles existed. The guests included Bonnie Eisenbeiser, Jan Pratt and Brenda Larson.

After shaping-up the members assembled at Gloria Greenleaf's home for a social hour with refreshments. Sue Kett and Janet Rossi were the co-hostesses.

MEETING THE STANDARD

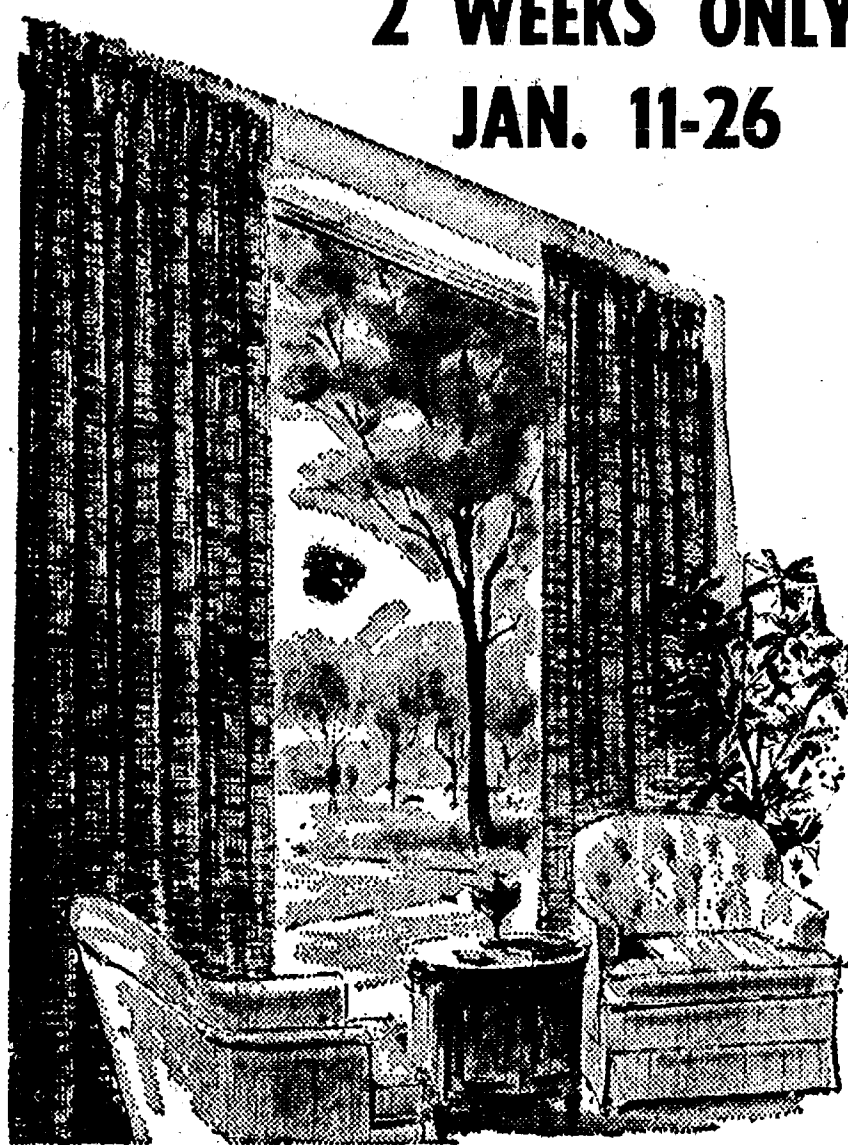
Under U.S. Department of Agriculture standards, "Beans with franks in sauce" must contain at least 20 percent franks.

DRAPERY SALE

SKLARE CUSTOM QUALITY

SAVE 20%

2 WEEKS ONLY
JAN. 11-26



- ★ HUNDREDS OF FABRICS
- ★ FINE WORKMANSHIP
- ★ MEASURING & INSTALLATION SERVICE

Merkel

HOME FURNISHINGS

Sign Up for Our Fall Needlework Classes

CLASSES BEGIN WEEK OF JAN. 14th

BEGINNING CROCHET (8 wks.) Tues. & Thurs. Afternoons, 1 to 3 and Wed. evening, 7:30 to 9:30. Cost \$9

BEGINNING KNITTING (10 wks.) Wed. Afternoon, 1-3 and Tues. evening, 7:30 to 9:30. Cost \$10

BEGINNING NEEDLEPOINT (6 wks.) Tues. morning, 9:30 to 11:30 and Tues. evening, 7:30 to 9:30. Cost \$18

BEGINNING CREWEL (6 wks.) Wed. morning, 9:30-11:30Cost \$15.00

FOR MORE INFORMATION CALL



TAILFEATHER CREATIONS

101 N. Main, Chelsea Phone 475-2512

VILLAGE BEAUTY SALON

101 N. MAIN

PHONE 475-1671

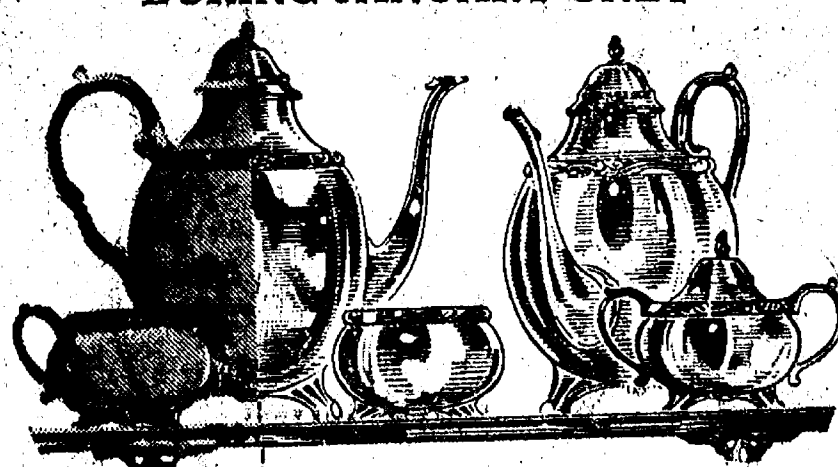
LORETTA

CHERYL - JANICE - CAROL - ARLENE

OPEN TUESDAY THRU SATURDAY
Evenings By Appointment

ALL SILVER REPLATING REDUCED 20%

No charge for straightening* DURING JANUARY ONLY



Every Item Replated at Sale Prices

Since the value of old silverplated items continues to soar... this is an excellent time to take advantage of these low, low prices to have your worn silverware, antiques and family heirlooms replated like new. These pieces are now more valuable than ever and make wonderful gifts. All work QUADRUPLE SILVERPLATED by our skilled silversmiths and Sale prices apply to ALL pieces.

FOR INSTANCE

Article	Reg. Price	Sale Price
Teapot	\$35.50	\$28.40
Creamer	18.50	14.80
Candlestick (per inch)	2.00	1.60
Sugar bowl	20.50	16.40
Trays (per sq. in.)	.16	.128

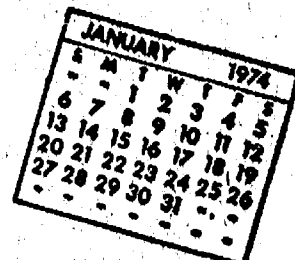
OUR NEW REPAIR POLICY

*FREE DENT REMOVAL and straightening on all items we silverplate.
*ONLY \$6.95 FOR ANY AND ALL ADDITIONAL REPAIRS, no matter how extensive, on any piece we silverplate. Includes soldering broken handles, tags, knobs, etc. (Only exceptions are for furnishing new parts)

SALE ENDS JANUARY 31
BRING IN SILVER TODAY!

WINANS JEWELRY

Community Calendar



Band Boosters, Thursday, Jan. 10, 8 p.m., music room at Chelsea High school.

Workshop for March of Dimes volunteers from surrounding townships and village of Chelsea, Monday, Jan. 14, 7:30 p.m., Chelsea High school cafeteria.

Chelsea Scholarship Committee will sell hot coffee, donuts and fruitdrink for children at intermission of the Travelogue on Saturday, Jan. 12, at Chelsea High school.

Esther chapter of Congregational church January meeting postponed until February.

OES special meeting for Jan. 16 cancelled.

Chelsea Camera Club, Tuesday, Jan. 15, 7:30 p.m., Sylvan Township Hall, with Marjorie LaRose and Mr. and Mrs. Carl Heller as co-hosts.

Chelsea Community Farm Bureau, Thursday, Jan. 10, 7 p.m., pot-luck supper, Sylvan Township Hall, with Marjorie LaRose and Mr. and Mrs. Carl Heller as co-hosts.

Parents Anonymous cares about parents who lose their cool with their children. Weekly meetings, no fees. Call Sandy, 475-7519.

Saturday Night Singles at Ann Arbor YM-YWCA, 350 S. Fifth Ave; dance at 9 p.m.

Monetary donations for Home Meal Service of Chelsea should be sent to Mrs. Helen Pearson, 725 Middle St.

Sylvan Township Board meeting the first Tuesday of the month, at 7 p.m., at Sylvan Township Hall.

Pap tests are free for all area women, Tuesday mornings, at St. Joseph Mercy Hospital, Ann Arbor. Call American Cancer Society office, 688-8857 for appointment.

Washtenaw County Medical Care Auxiliary, Wednesday, Jan. 16, 9:30 a.m., Juvenile Court Center, 2270 Platt Rd., Ann Arbor. Agenda: Report on Christmas giving, approval of membership letter, approval of board of directors of the Wayside Inn project. Visitors welcome.

Rogers Corners Study Group, Tuesday, Jan. 15, home of Mrs. Luther Schaible. Roll call topic: "My Favorite Christmas Gift."

Rogers Corners Farm Bureau, Friday, Jan. 11, 8:30 p.m., home of Mr. and Mrs. John Miller, Heber Rd.

Masonic Banquet, Olive Lodge No. 166 F&AM, Saturday, Jan. 19, Dinner at 7 p.m., St. Paul church. Program following. Reservations by Jan. 15, with Don Dancer, 475-7683.

Ostomy Club of Washtenaw county, Thursday, Jan. 17, at 7:30 p.m., at the Senior Citizens Guild, 502 W. Huron St., Ann Arbor. Speaker, Mrs. Gay Mattocks of the Hollister Co.

OES Past Matrons, Thursday, Jan. 10, 12:30 p.m., at the home of Mrs. Lawrence Wacker.

March of Dimes Fashion Show Saturday, Feb. 2, 1974, Downtown Ramada Inn, Ann Arbor. Cocktails at noon, luncheon and fashion show at 1 p.m. Theme: "My Fair Lady."

American Legion and Auxiliary hospital equipment available by contacting Joel Bank at 475-1745.

Open meeting of Advisory Committee on the Status of Women, Monday, Jan. 14, 7:45 p.m., room 117A Washtenaw County Building, corner of Huron and Main, Ann Arbor.

One hot meal a day delivered to the home of elderly or disabled, seven days a week, to people liv-

Mortgage Burning Ceremony Held at St. Paul Church

On Jan. 6, the St. Paul congregation participated in a "Mortgage burning" ceremony during their morning worship service. This ceremony took place about three years ahead of schedule. In the service, following a hymn "The Church's One Foundation," and a prayer, members representing the groups within the church came forward and offered words of gratitude while placing pieces of the "mortgage" in a brazier of hot coals in the chancel. There was a closing litany, the singing of "Blest Be the Tie That Binds" and a benediction.

Participating in addition to Pastor Siebert were George Knickerbocker for the original building committee; Mrs. David Strlefer for the present church council; Mrs. Howard Flintoft for the Women's Fellowship; Mrs. Norman O'Connor for the church school; Steve Schanz for the SYF; Mrs. Lloyd Walz for Spiritual Life; Robert Rasmussen for Christian education; Mel Seitz for stewardship; James Stirling for church and community; Norman O'Connor for building and grounds. The building cost \$350,000, including the organ and contents.

George Knickerbocker planned the special service.

Mr. and Mrs. Paul Guttman and son visited her mother, Mrs. Billy Miller, over the holidays. Mrs. Guttman is the former Patricia Oppe of Chelsea. She is now attending the University of Akron, specializing in speech, and she plans to teach next year. This past semester she was named to the dean's list.

ing in the Chelsea area. For information call 475-8014 or 475-2923.

Senior Citizen Fun Nite every Friday evening at 7:30.

American Legion Auxiliary, Wednesday, Jan. 8 p.m. home of Mrs. Gladys Klumpp.

Inquiries regarding the Chelsea blood bank may be directed to Harold Jones in the event that Mrs. Dudley Holmes is unavailable, or to Mrs. Pauline McKenna, American Red Cross in Ann Arbor, 971-5300.

Recreation Basketball League Begins Action

With almost more sports around than there is time to write about, another basketball league opened Tuesday night, this the Chelsea Recreation Men's League. It's an expanded league this year, with 10 teams instead of the eight it had last year, with more than 110 men participating.

In the first Tuesday night of action (games will also be played on Thursdays) Brown Drug, Chelsea Lumber Co., and the Independents took early-season leads in the standings with victories.

Brown Drug trounced the Wolverine Prairie Chickens, 54-27, in a game that was close in all quarters but the second. Brown Drug held the Prairie Chickens to two points in the second period, which proved to be the turning point for the game. High scorers for Brown Drug were John Flannery with 20 and Tom Kennedy with 13. Jim Eppin hit 11 points for Wolverine.

Defense ruled the Chelsea Lumber-North American Rockwell contest, which ended with Chelsea Lumber on top, 49-37. The game was decided in the fourth quarter

as Chelsea Lumber outscored Rockwell, 21-11.

High scorer for the winners was Craig Houle, who was good for 19 points. Dennis Stofer added 10. For Rockwell, Matt Murphy was tops with 10 points.

Dana was drowned in a deluge of buckets from the Independents. The fine defensive play and organized offense of the Independents were too much for Dana, as they were decisively out-scored in every quarter.

For Dana, the three top scorers Siebert, Wireman, and Weiss, netted a meager four points each, for the Independents, Flint and Sweeney each hit for 10 points.

MEN'S RECREATION BASKETBALL

Standings as of Jan. 8

	W	L
Brown Drug	1	0
Chelsea Lumber Co.	1	0
North American Rockwell	0	1
Wolverine Prairie Chickens	0	1
Dexter Rabble	0	0
Dunlavy Farms	0	0
Heydlauff's	0	0
Lloyd Bridges Chevrolet	0	0



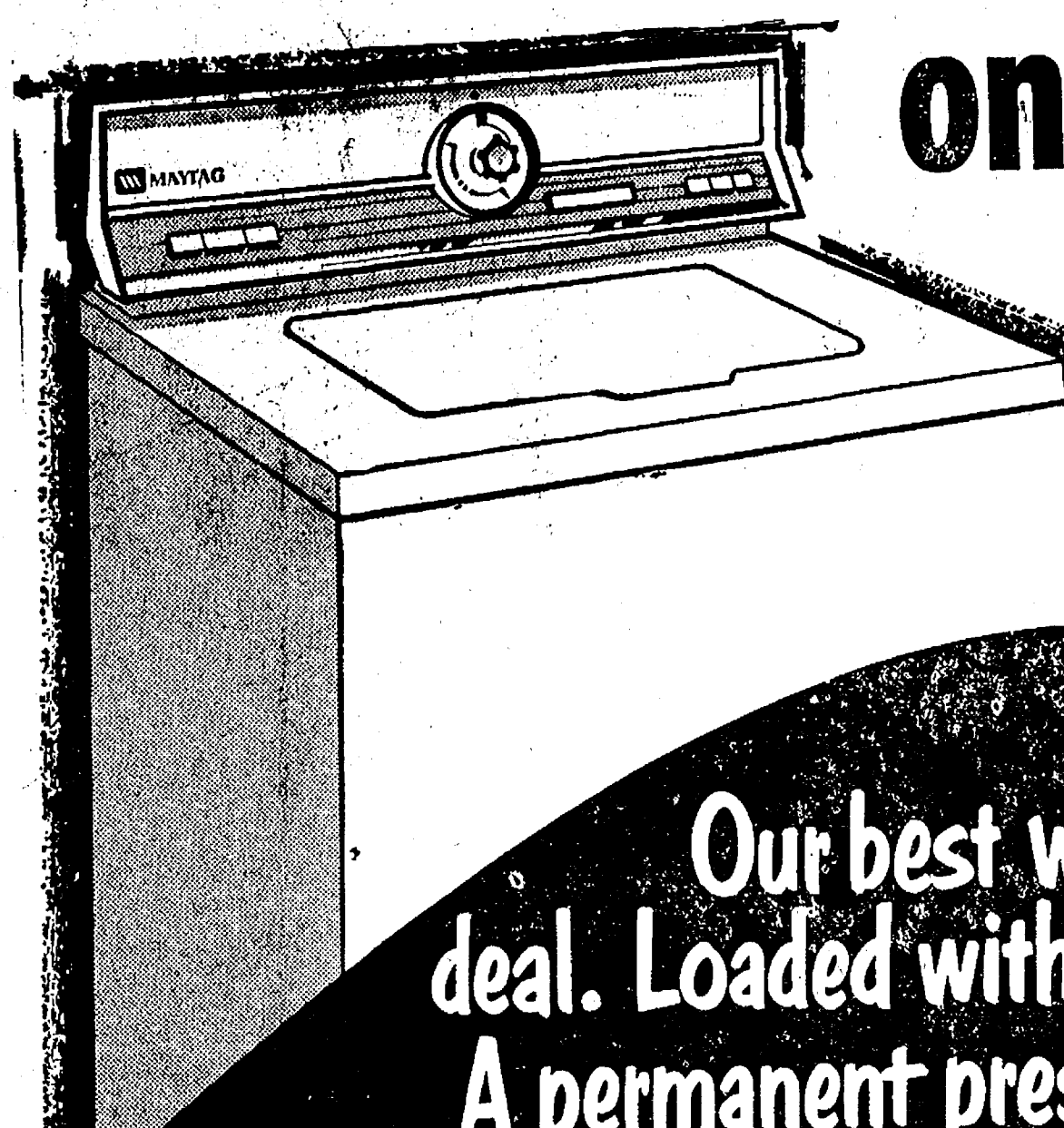
MOVING UP IN THE CHESS WORLD are two Chelsea competitors, who, without benefit of a sponsoring organization or coach, entered the Ann Arbor chess tournament last week and came up winners. Dan Schirilla, left, and partner, Dan Williams, received a fifth-place team trophy, and Williams received an eighth place individual trophy.

Subscribe Today To The Standard!

This Week's Special

MAYTAG WASHER...

\$**238⁸⁸**
only



Model A106

REGULAR or
PERMANENT
PRESS
CYCLE

SMALL,
MEDIUM or
NORMAL Water
Levels

HOT, WARM
or COLD WASH
WARM OR
COLD RINSE

FAMILY SIZE
PORCELAIN
ENAMEL
WASHBASKET

SELF-CLEANING
NO-RUST
POLY PUMP

QUIET,
DEPENDABLE
TRANSMISSION
HELICAL DRIVE

PORCELAIN
ENAMEL
SAFETY
LID
STOPS ACTION
IN SECONDS

ZINC COATED
STEEL CABINET
WITH ACRYLIC
ENAMEL FINISH



Our best washer
deal. Loaded with features.
A permanent press cycle
and Maytag dependability. You'll
never get a better
washer value!!

HEYDLAUFF'S

113 North Main St., Chelsea

Phone 475-1221



VALUE, QUALITY, BEAUTY...

MERRILLAT PUTS IT ALL TOGETHER
IN A GREAT CABINET CALLED...

"FOREST OAK"

IN
STOCK

NOW

AT
CHELSEA
LUMBER

- FOR YOUR CONVENIENCE
- FOR YOUR SAVINGS

Choose YOUR new kitchen from our Big Stock of
Forest Oak and Castle Oak cabinets by Merrillat
BOTH...

1 3

OFF

YEAR
'ROUND

TO GIVE YOU THE AREA'S
GREATEST KITCHEN VALUES

(*CASH-N-CARRY - FREE DELIVERY OVER \$100)

TRY CHELSEA LUMBER

WHEN YOU'RE READY FOR THAT NEW KITCHEN!



1101 M-52, Chelsea
Corner of M-52 and Old US-12

OPEN: 9 to 9 Daily
10 to 6 Sunday

MEAT SPECIALS

LOW BUDGET SPECIAL

Turkey Drumsticks

29¢ lb.

FRESH LEAN MEATY

Spareribs

99¢ lb.

HYGRADE BALLPARK

FRANKS

lb. \$1.19

WEST VIRGINIA SLICED

BACON

lb. \$1.25

WEST VIRGINIA THICK SLICED

Bacon

1 1/2-Lb. Pkg. \$1.89

HYGRADE SPORTSMAN

Bologna

12-Oz. Pkg. 89¢

U.S. GOVT. INSPECTED YOUNG

Tom Turkeys

lb. 69¢

ARMOUR STAR

LARD

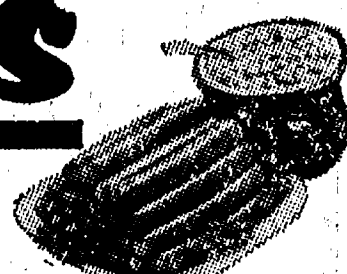
3-Lb. Crtn. \$1.29

BORDEN'S GLACIER CLUB

ICE CREAM

1/2 gal. 59¢

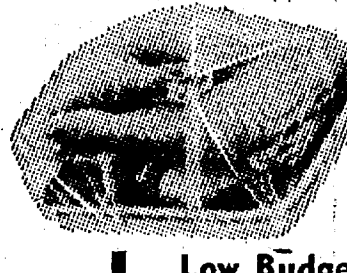
WITH COUPON



Eckrich
All Meat

FRANKS

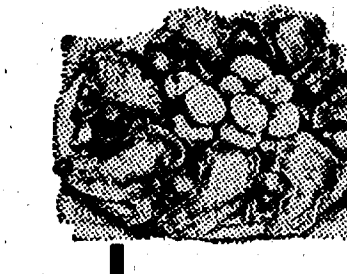
SAVE \$1 Limit 2 Lb. Pkg. 89¢ With Coupon



Breasts &
Legs

1/4 FRYERS

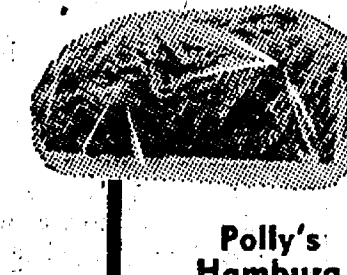
Low Budget Special! 59¢ lb.



Sliced
1/4 Loin

Pork Chops

Delicious with Applesauce! 98¢ lb.



Fresh Polly's
Beef Mix

HAMBURG

Polly's Hamburg Buns only 38¢ 99¢ lb.



Here It Is! The
Second Big Week
of Polly's Sensational
Value Packed..

STEAK SALE

U.S.D.A. CHOICE

Round Steak

SAVE 30¢ \$1.59 lb.

U.S.D.A. CHOICE

Strip Steak \$2.89 lb.

U.S.D.A. CHOICE

T-Bone Steak

SAVE 40¢ \$1.89 lb.

U.S.D.A. CHOICE

Club Steak \$1.89 lb.

U.S.D.A. CHOICE

Filet Mignon \$3.99 lb.

U.S.D.A. CHOICE

Sirloin Steak

SAVE 20¢ \$1.79 lb.

U.S.D.A. CHOICE NEW YORK

Club Steak \$2.89 lb.

U.S.D.A. CHOICE

Porterhouse

SAVE 40¢ \$1.99 lb.

CENTER CUT BLADE

Chuck Steak 98¢ lb.

U.S.D.A. CHOICE BONELESS

Round Steak \$1.79 lb.

FROZEN FOOD Buys

6-OZ. QUEEN OF SCOT

Orange Juice .5 for \$1

16-OZ. SCOT LAD CRINKLE CUT

Potatoes 29¢

16-OZ. BOOTH

Fish Sticks 79¢

24-OZ. ORE IDA

Stew Veg'tables 49¢

10-OZ. GREEN GIANT

Niblet Corn ... 35¢

8" BANQUET

Apple Pie 2 for 89¢

8" BANQUET

Cherry Pie ... 2 for 89¢

8" BANQUET

Peach Pie ... 2 for 89¢

Health & Beauty Aids!

7-OZ. CREST REG. OR MINT

Toothpaste 79¢

60-CT.

EXCEDRIN 69¢

100-CT. BIO-MARK MULTIPLE

VITAMINS 89¢

100-CT. BIO-MARK WITH IRON

VITAMINS 89¢

150-CC. DRISTAN

NASAL MIST 99¢

1.7-OZ. PRELL CONCENTRATE

SHAMPOO 39¢

3.5-OZ. PRELL LIQUID

SHAMPOO 39¢

36-CT. ST. JOSEPH CHILDREN

Aspirin 29¢

24-OZ. JOHNSON & JOHNSON

BABY POWDER . . . \$1.19

400-CT. JOHNSON & JOHNSON

COTTON SWABS 99¢

3-OZ. SILENCE IS GOLDEN

COUGH SYRUP . . . \$1.27

10-OZ. SECRET A/P

DEODORANT 99¢

8.75-OZ. SECRET SUPER

DEODORANT 99¢

18-OZ.

SCOPE 99¢



Polly's
Produce
Is...

Fresher by Far!

GOLDEN RIPE CHIQUITA

BANANAS . . . lb. 12¢

PINK OR WHITE ORCHID

Grapefruit . . 2 for 39¢

FULL OF VITAMINS - CELLO BAG

Spinach 39¢

FIRM CRISP CALIFORNIA

CABBAGE . . . lb. 12¢

BEAUTIFUL WHITE

Cauliflower . . . 69¢

FRESH LARGE

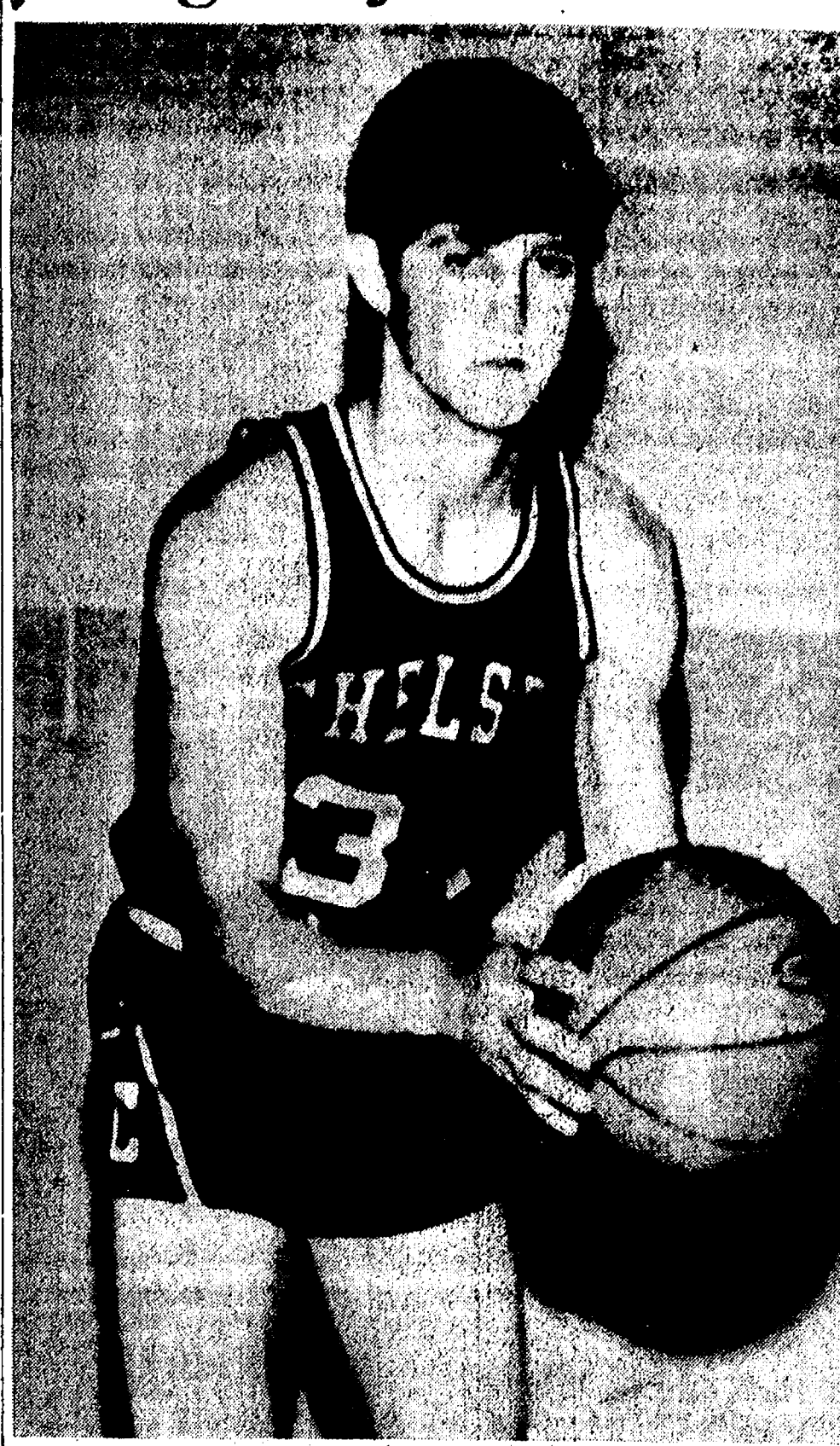
Eggplant 29¢

The Chelsea Standard

Second Section—Pages 7-12

CHELSEA, MICHIGAN, THURSDAY, JANUARY 10, 1974

Cager of the Week



RICK MILLER is a 6'2" senior forward presently playing his third year of varsity basketball for the Bulldogs. Rick, who says of his teammates, "We're playing good ball—things are starting to fall into place," predicts that Chelsea will come out on top in tomorrow night's contest with second-place Milan. Rick has also played varsity football for the Bulldogs and would like to play college ball, but fears he's "too small, really, to play." Outside of sports, he enjoys hunting, and is an interested and active member of Curt Farley's building trades class at the high school. "You learn a lot just working on the house," he says of the project. "It's practical stuff." After high school, he may study agriculture, but presently is undecided. He lives with his parents, Mr. and Mrs. Glenn Miller, and has three sisters, Linda, Sue, and Cindy, and two brothers, Randy and Bob.

Career Education Center Vote Set for Jan. 22 Through County

Educators are once again attempting to do something for the students who are not geared for college or who are unable to obtain further education in trade or vocational schools. Voters in Washtenaw county will be going to the polls on Tuesday, Jan. 22 and asked to vote "yes" on a proposed Career Education Center. All of the high schools in Washtenaw county, including Chelsea High, will benefit from the Career Center. Statistics show that 50 percent of the 3,000 students graduating each year are leaving the high schools prepared for nothing. Of this 50 percent, about 22 percent, or 300 students, have had exposure to vocational offerings in high school and may be prepared for a job. But about 1,200 leave high school with no job skills and no thought of entering college or trade schools. The Career Center will offer additional vocational courses while the student is in high school to better prepare him for the working world. "All things being equal, including transportation and unlimited quotas," notes George Bergman, Chelsea High counselor, "about 200 students in Chelsea High could take advantage of a Career Center." He adds that many Chelsea students are on the Vo-Ed program, but of necessity, it is a limited program. A "yes" vote on the Career Center proposal will mean about \$10 in increased taxes on a home with a market value of \$20,000, according to proponents of the measure. To be built on a centrally located site, the Career Center will also be available to those college-bound youth who require supplemental programs, adult programs for graduates, and remedial and special education for handicapped children.

GO GAMBLES

CHAIR SPECIALS



SAVE \$30

NAUGAHYDE®

ROCKER/RECLINER

\$119.88

REG. \$149.95

Double comfort with deep Styloam cushioning and easy-care black or palm leaf green cover.



SAVE \$40

HERCULON®

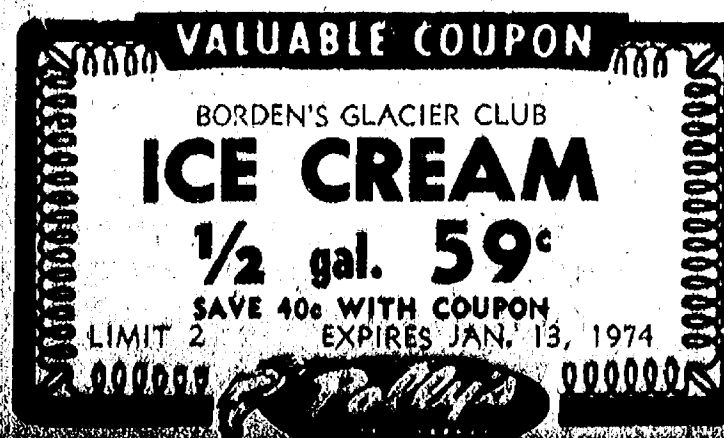
ROCKER/RECLINER

\$129.88

REG. \$169.95

Long-wear olefin fabric with tufted back, Styloam cushioning. Storm green.

Go GAMBLES for Savings!



Ads
Taken
Till 1 p.m.
Tuesday

USE ACTION-PACKED WANT ADS

Just
Phone
475-1371

WANT ADS

WANT ADS

WANT ADS

WANT ADS

WANT ADS

WANT ADS

The Chelsea Standard
WANT AD RATES

PAID IN ADVANCE—All regular advertisements, 70 cents for 25 words or less, each insertion. Count each figure as a word. For more than 25 words add 8 cents per word for each insertion. "Blind" ads or box numbers add 50 cents extra per insertion.

CHARGE RATES—Same as cash in advance, with 25 cents bookkeeping charge if not paid before 1 p.m. Tuesday preceding publication. Pay in advance, send cash or stamps and save 25 cents.

DISPATCH WANT ADS—Rate, \$1.40 per column inch, single column width only. 6-point and 14-point light type only. No boldface or boldface type. Minimum 1 inch.

CARDS OF THANKS or MEMORIALS—Single paragraph style, \$1.50 per insertion for 50 words or less; 3 cents per word beyond 50 words.

COPY DEADLINE—1 p.m. Tuesday week of publication.

**CALL NOW
SAVE \$\$\$
Greenwood**

for
Siding - Remodeling

FREE ESTIMATES
Call
Chelsea 475-2400

29tf

FOR RENT—Fair Service Center
for meetings, parties, wedding receptions, etc. Weekdays or weekends. Contact John Wellnitz, phone 475-1518.

x31tf

KNAPP SHOES

For Cushion Comfort
Robert Robbins
475-7282

47tf

4 - 1973 VACUUM CLEANERS, \$28.50—Four store floor demonstrators and salesman's samples, cannot be told from new. Comes with all cleaning tools and even a rug shampooer. Only \$28.50 cash or terms arranged. Trades accepted. Call Ypsilanti collect, 482-8597, 9 a.m. to 9 p.m. Electro Grand. 30



"If the insurance agency we saw in the Standard Want Ads knew I was driving—I bet they'd be worrying, too!"

"HILLTOP"

PLUMBING, HEATING & ELECTRICAL CONTRACTING
Robert Shears, Master Plumber

NO JOB TOO LARGE
OR TOO SMALL

1414 S. Main St., Chelsea
475-2949

x20tf

**FORMAL WEAR
RENTAL SERVICE**

Proms - Weddings - Special Events
6 different colors.

Foster's Men's Wear

CAR & TRUCK LEASING. For details see Lyle Christwell at Palmer Motor Sales, 475-1301. 49tf

C—ustom Built Homes
O—h! We Remodel too.
U—can count on us
N—o Job Too Small
T—rim Inside & Out
R—ough-In Only If
Y—ou Want to Finish
S—iding Aluminum, 5" Gutters
I—mmediate Attention
D—ALE COOK & CO.
E—stimates, Free

3UILDERS

Please Call
475-8863.

DALE COOK

17tf

**McCalla's
Mobile Feed Service**

Now Open for business,
8 a.m. to 6 p.m.
12875 Old US-12, Chelsea

Water softener salt, Wayne dog food, cat food, horse feed.

WAYNE FEEDS

x29

GUITAR LESSONS—Class or private instruction, all styles. Our studios will accommodate banjo, flute, recorder, keyboard, bass, drums, clarinet, oboe and sax. Call Ann Arbor Music Mart, 769-4980, 336 S. State St. Open 9:30 a.m. to 9 p.m., Mon-Sat.

x30

FOR RENT—Apartment in duplex. Two bedrooms. Carpeted, stove, refrigerator, full basement. Chelsea area. No children or pets. Call 426-2787.

x29tf

Real Estate

A NICE OLDER HOME, large kitchen, carpeting, blacktop drive, one block from South school, Chelsea.

A "CAMP DAVID" of your own, private lake, 1 1/4 acre lot, mobile home, underground sprinkling system, your own beach, and boat dock.

SMALL 2-bedroom home, lake privileges. LC terms.

MUST SEE, 4-bedroom, 3 1/2 baths, 10-acre lot, Chelsea schools, mid 80s.

10-ACRE LOTS, Chelsea schools, one 2-acre lot.

WE DO NEED LISTINGS

Eibler & St. Amour
REALTORS
8047 Main, Dexter 426-4659
Eves.: Dave Murphy, 475-1274

x30

CHELSEA

NEW LISTING—3-bedroom brick ranch, finished recreation room, garage, large lot, edge of the village. Possible land contract.

NEW LISTING—3-bedroom brick home, central air, sauna bath, dining room, recreation room, 2-car garage, 2 fireplaces, excellent area.

COUNTRY LIVING—10 acres, remodeled older home, 3 bedrooms, new pole barn. \$39,500.

BEAUTIFUL YEAR 'ROUND HOME on North Lake, nice trees, 3 bedrooms, family room, walk-out lower level.

115 ACRES — 4-bedroom home, barns, Chelsea schools.

\$29,900—Napoleon schools, 3-bedroom ranch, family room, dining room, breezeway & garage.

NEW HOME—3 bedrooms, dining room, family room, fireplace, 2 1/2 baths, 2-car attached garage. Chelsea schools.

START CHOOSING YOUR BUILDING SITE now for spring construction. Various size parcels to choose from.

Frisinger Realtors
475-8681

Eves:
Herman Koenn 475-2613
Mary Ann Staebler 475-1432
Paul Frisinger 475-2621
Toby Peterson 475-2718
Hope Bushnell 475-7180

SEWS STRETCH MATERIAL
1973 DIAL AND STITCH, \$51.50 —Left in layaway. Sews stretch material. Comes with a walnut sewing table. Beautiful pastel color. Full size head, all built-in to Zig-Zag, buttonholes, overcast, makes fancy stitches. Only \$51.50 cash or terms arranged. Trades accepted. Call Ypsilanti collect, 482-8597, 9 a.m. to 9 p.m. Electro Grand.

30

**NEW '73s
at
Tremendous Savings**

'73 DODGE Crystar camper van conversion Save \$425

'73 CHRYSLER Newport 4-dr. sedan Save \$919

'73 DODGE D-100 Club cab. Save \$680

'73 DODGE D-200 Camper Special Save \$677

Quality Used Cars

'73 PLYMOUTH Fury III 4-dr. hardtop, 318, auto., p.s., p.b., air cond., rear defogger, auto. speed control \$2995

'72 PONTIAC Gran Prix 2-dr. hardtop, V-8, auto., p.s., p.b., power windows, air cond., cruise control, AM/FM, vinyl roof, buckets \$2495

'71 DODGE B-200 Sportsman wagon, 318, auto., p.s., low mileage, and sharp \$2495

'69 CHRYSLER 4-dr. sedan, V-8, auto., p.s., p.b., air cond. \$1295

'69 BUICK Sport Wagon, V-8, auto., p.s., p.b., air cond. \$1295

'68 CHRYSLER 300, 4-dr. hardtop, full power, air cond., sharp \$895

'67 CHEVY 1/2 ton pick-up, 283, 3-speed, step bumper, good condition \$895

**Transportation
Specials**

'64 TEMPEST Wagon, 6-cyl. auto., Excellent transportation \$295

**Village
Motor Sales, Inc.**
IMPERIAL - CHRYSLER
DODGE - PLYMOUTH
Phone 475-8661
1185 Manchester Rd., Chelsea
Hours: 8 a.m. to 6 p.m.
Tues. thru Fri. Until 9 Monday.
9 a.m. to 2 p.m. Saturday

x30tf

REAL ESTATE

BRAND NEW — 2-bedroom home, fully carpeted, full basement, natural gas heat, attached garage, on 1/2 acre, near Gillelles Lake. \$14,900.

5 BEDROOMS, two-story farm house with beautiful tall maple trees on 1.3 acres backing to state land. 3 minutes to town. Chelsea schools. \$29,500.

CHELSEA SCHOOLS—Your dream home will come true on this beautiful 13 acres with a pond and rolling hills. \$1,500 per acre. Low down payment on land contract.

BEAUTIFUL MIXED WOODS building site backed with pine tree grove, some pasture land, some marsh, total approximately 50 acres. State land on two boundaries \$350 per acre, cash.

2-ACRE BUILDING SITES, low down payment, 7% land contract. Northwest of town, Chelsea schools.

10-ACRE PARCELS, Lyndon township, beautiful view of Joslin Lake, one with very active fishing creek, 7% land contract.

34 ACRES on surfaced road. Nice building sites, \$1,100 per acre. Stockbridge schools.

DEXTER SCHOOLS, excellent building sites, 10 acres or more. Wooded or sunny. Land contract terms.

WATERLOO REALTY

JOANN WARYWODA, BROKER
Phone 475-8674

Evensing:
Steve Suliman, salesman and licensed broker, 475-1743
Sue Lowe, 475-8674.

x30tf

**McCulloch
Chain Saws**

WE SELL, SERVICE,
SHARPEN AND TRADE.

Chelsea Hardware

21tf

WANT ADS

18 ACRES with flowing stream. Terms.

List your property with us for fast, efficient service.

**R. D. MILLER
REAL ESTATE**
Real Estate Broker
475-7311
15775 Cavanaugh Lake Rd.
Chelsea, Mich.
EVELYN WHITE
475-7551

21tf

SNOWMOBILE TRAILERS, tilt and swing, \$139.95. Snowmobile sleds, \$39.95. Two-piece snowmobile suits, regular \$79.95, special \$41.95. Snowmobile boots, regular \$15.95, children's, \$6.95, ladies, \$8.95, men's, \$9.95. Coffman's Sport Center, 1011 Lansing Rd., Jackson. Open 9-9 daily, Sundays, 12-6.

x23tf

**CONSERVE HEAT
Insulate With
Aluminum Siding**

Eliminates painting and increases value. 10% discount, Dec., Jan., and Feb.

For free estimate call 861-8657. We do roofing and gutters.

**Mills
Construction Co.**

40tf

**SANDE'S
TEXAS TACK**

12005 Seio Church Rd.
Corner Lima Center Rd.
Chelsea, Mich.
Lee jeans, shirts, jackets.
Riding equipment for the western horse.

475-2596

4-H Club members, 10% discount. Open 7 Days A Week.

x29tf

HOUSE FOR SALE—Brick, 3 bedrooms, 1 1/2 baths, more than 2,100 sq. ft., with garage. 800 Book. Ph. 475-8911.

x29tf

REAL ESTATE

SMALL 1-BEDROOM HOME—On a large lot on edge of town. Ideal for a couple or a single person. Gas heat. Carpeted. \$16,900. Terms possible.

3-BEDROOM — Panelled family room with brick fireplace, aluminum siding, village water and sewer.

ONE ACRE building site in North Lake area, \$8,500.

CLARENCE WOOD
BROKER
646 Flanders St.
Phone 475-2038

29tf

**Always at Your Service
on the Double Quick!**

Looking for heads-up auto service? Look no further. That's us! Always on our toes to serve you promptly, efficiently, courteously!

Jim's Union 76 Service

Tires — Batteries — Tune-Ups — Brake Service — Wheel Alignment
PHONE 475-2922

501 SOUTH MAIN

WANT ADS

DESPERATE NEED for house of any kind to rent, as long as livable. Call James Adams at Fortune Industries, 475-8619. x30

CHELSEA SCHOOLS

STARTER HOME IN VILLAGE — 3 bedrooms, partially air-conditioned, fenced yard, low down payment. \$20,900.

BRICK RANCH IN VILLAGE — Formal dining room, family room, 5 bedrooms, fireplace, 2 baths. A "NICE" home.

BRICK RANCH IN COUNTRY — High on hill, beautiful view, 3 bedrooms, 2 baths, walkout basement, a great spot.

COLONIAL IN COUNTRY—New, 4 bedrooms, 2 1/2 baths, family room, fully carpeted, in area of "fine" homes.

LAKEFRONT—4 bedrooms, walk-out to lake. \$39,000.

RANCH HOME & 13 ACRES — 3 bedrooms, large horse barn with corral.

COLONIAL IN VILLAGE — Older home, 4 bedrooms, 2 baths, could be used for income. \$29,900.

BRICK RANCH ON 3 ACRES — Within the village, 2 fireplaces, laundry room, 3-car garage. A lovely home with lovely grounds.

FARM—76 acres in the heart of Waterloo, good crop land, good recreation land.

Stockbridge Schools

STARTER HOME IN COUNTRY — 3 bedrooms, brick, lake access. \$24,900.

QUAD LEVEL & 10 ACRES — New, beautiful view, 3 bedrooms, 2 baths, deck overlooking acreage. \$45,000.

COLONIAL IN VILLAGE—Large, older, stately, pretty. Ideal for large family and the antique buff.

BUILDING SITES

2 ACRES—wooded.
10 ACRES—rolling, terms.
14 ACRES — lake on property, terms.

30

**ROBERT H.
THORNTON**
JR. PC
REALTOR
323 S. Main St., Chelsea 475-8628
5640 Jackson Rd. Ann Arbor
769-5950

Eves:
John Pierson 475-2064
Bob Riemschneider 475-1469
Dorothea Henry 475-7356
Dawn Allison 663-4307
Bob Thornton 475-8857

x30

FOUND—2 beagles, 1 mile north on McKinley. Owner may claim by identifying dogs, paying for ad and calling 475-2028.

30

WILL DO babysitting in my home on South St. Molly (Foster) Grissom, 475-2971.

-30

**CLOGGED
SEWER**

**Reynolds Sewer
Service**

We Clean Sewers Without Digging
Drains Cleaned Electrically

**FREE ESTIMATES
2-YEAR GUARANTEE**
Phone Ann Arbor NO 2-5277
"Sewer Cleaning Is Our Business—
Not a Side-Line"

38tf

**BRAND NEW
HOUSE
FOR SALE**

**HALF MOON
LAKE**

3-Bedroom Ranch

DINING ROOM
FAMILY ROOM
FIREPLACE
2-CAR GARAGE
FULL BASEMENT
STOVE - DISHWASHER
REFRIG. - DISPOSAL
2 FULL BATHS
INSULATED GLASS
BRICK AND CEDAR
CARPETING
REAR PATIO

Setting in a
Breath-taking
Pine Grove
\$47,900

WEBER HOMES
475-2828

x33

LOST—Blond retriever, medium build, three white paws, had collar with tags when last seen. Answers to name "Boots." Last seen Friday, Jan. 5 on Old US-12, West. Reward. Ph. 475-8513.

30

PERSON OR PERSONS who took the cow bell from the Rod & Gun Club on New Year's Eve, please return and no questions asked.

30

FOR SALE—Two 9'x12' gray Bigelow rugs with pads; B/W TV; bookcase, gas dryer, Neco roaster, 2 portable tape recorders; typewriter, stand, new electric barbecue, humidifier, GE stove and refrigerator, 10-band portable radio. Call 475-7307 or 2545.

30

PATCHING and PLASTERING.
Call 475-7489. 33tf

FOR SALE

CAVANAUGH LAKE

WINTERIZED, lake-front cottage. Exterior newly painted. \$27 Ridge Rd. \$18,500.

Phone

EVELYN WHITE
475-7551 after 5 p.m.
ROY D. MILLER, Broker
475-7311

18tf

A fine selection of
New and Used Cars
for immediate delivery

**Harper Pontiac
Sales & Service**
475-1306
Evenings, 475-1608

23tf

Special of the Week
1969 Buick Skylark 2-dr. hardtop, 44,000 miles
\$1395

USED CARS

1973 BUICK Riviera hardtop sport coupe, air cond. \$4495

1973 BUICK Centurion 2-dr. hardtop, air cond. \$3695

1973 OLDS Delta 88 Royale 2-dr. hardtop, air cond. \$3295

1973 CHEV Impala 2-dr. hardtop, air cond. \$2595

1973 CHEV Impala 4-dr. hardtop, air cond. \$2595

1972 PONTIAC Grandville 4-dr. hardtop, air cond. \$2395

1971 FORD LTD 2-dr. hardtop, air cond. \$1595

1971 OLDS Vista Cruiser wagon, 3-seat \$1795

1971 DODGE Monaco wagon, air cond. \$1595

1969 CHEV Chevelle 2-dr. hardtop, 4-speed \$895

1968 OLDS Delta 88 4-dr. sedan \$595

1968 MERCURY Monterey 4-dr. sedan, air cond. \$695

1968 BUICK Electra 225 2-dr. hardtop, air cond. \$695

1967 BUICK Electra 225 4-dr. hardtop, air cond. \$795

1966 OLDS Delmont 88 4-dr. hardtop, air cond. \$395

**SPRAGUE
Buick-Olds-Opel, Inc.**
Phone 475-8664
1500 S. Main St., Chelsea

30tf

SPECIAL on ceramic baths before March 1. Free estimates. 1-489-4615.

x33

PROFESSIONAL MAN desires furnished one-bedroom duplex in the country. No pets or children. 8 to 4 p.m., 475-1311 ext. 316. After 5 p.m., 761-1772.

x31

FOR SALE—AKC Doberman pups. \$150. Ph. 475-7611.

x30

SORRY SAL is now a merry gal. She has used Blue Lustre rug and upholstery cleaner. Rent electric shampooer, \$1. Dancer's. 30

663-6635.

x45

Signs Painted
475 - 7391

CHICKEN LAYING CAGES, with feeders, \$1.00 each in lots of 12. Also, three feeder steers, mixed hay and straw. Ph. 428-7492. 20tf

EL CAMINO CAMPER TOPS, \$279 and up. Coffman's Sport Center, 1011 Lansing Rd., Jackson. Open daily, 9-9, Sundays, 12-6.

x23tf

**GAR - NETT'S
Flower & Gift Shop**
Your Friendly Florist
112 E. Middle St., Chelsea
PHONE 475-1400

Funeral Flowers
Wedding Flowers
Out Flowers (arranged or boxed)
Potted Flowering Plants
Green Plants - Corsages

WE DELIVER

MINI-BIKES—Christmas layaways accepted. All fantastically reduced. Winter closeouts. Coffman's Sport Center, 1011 Lansing Rd., Jackson. Open daily, 9-9, Sundays, 12-6.

x23tf

NELSON'S

Complete small breed grooming hygiene and coat care by certified professionals. No tranquilizing. FREE PICK-UP AND DELIVERY Schnauzer and Poodle Stud Service

For appointment, call 761-3745

x33

CHELSEA

COME TO THE COUNTRY — 10 acres, new pole barn, remodeled older home. \$39,500.

TRY YOUR HAND at farming — 115 acres, 4-bedroom home, barns, Chelsea schools.

IS RECREATION your bag?—Try Joslin Lake with this 2-bedroom home, screened porch, on 1 acre.

AAA RATING HOME—Napoleon schools, 3-bedroom, family room, dining room, 1 1/2 baths, 2 1/2-car garage.

STONE FIREPLACE to help keep you warm, central air to cool you included in this great family home, 3 bedrooms, family room, dining room, rec. room.

BE YOUR OWN BOSS—We have just what you need! An operating orchard, with cold storage and some equipment, 3-bedroom home, Clinton schools.

NEW HOME wants owners to help keep it warm—3 bedrooms, dining room, family room, fireplace, 2 1/2 baths, 2-car attached garage. Chelsea schools.

FOR "LANDS" SAKES see us—We have various size parcels in various locations.

Chelsea's FIRST Realtor

**FRISINGER
REALTORS**
Chelsea 475-8681

Evenings:
Toby Peterson 475-2718
Hope Bushnell 475-7180
Herman Koenn 475-2613
Mary Ann Staebler 475-1432
Paul Frisinger 475-2821

25tf

**Your
Approval**

Is the
cornerstone
of our
business.

Staffan Funeral Home
"Funeral Directors for Four Generations"
124 PARK STREET
PHONE GR 3-4417

SCHNEIDER'S GROCERY
CHOICE MEATS - FINE FOODS

3-LB. BAG
McIntosh Apples . 49c

3-LB. BAG
Jonathan Apples . 49c

3-LB. BAG
Delicious Apples . 75c

1-LB. PKG. ECKRICH
Bologna \$1.09

HOME-MADE BULK
Sauerkraut, 2 lbs. 69c

**AWREY
BAKED GOODS**

12-OZ. CANS
Coke 8 pac 95c

KEYKO
Margarine . 2 lbs. 79c

24-CT. CALIFORNIA
Celery 33c

McDONALD'S
ICE CREAM
All flavors (except premium)
1/2 gal. 87c

**ALEXANDER & HORNUNG'S
OLD-FASHIONED
HOT DOGS & BOLOGNA**

WANT ADS

Automotive Rust Proofing Cars and Trucks

Village Motor Sales, Inc.
IMPERIAL - CHRYSLER
DODGE - PLYMOUTH

1185 Manchester Rd., Chelsea
Hours: 8 a.m. to 6 p.m.
Tues. thru Fri. Until 9 Monday.
9 a.m. to 2 p.m. Saturday

FOR SALE—Ford truck rims, Ph. 475-8809. x20

ROBERT A. ALDER, licensed contractor, Residential building, remodeling. No job too small. 18200 Boyce Rd., Gregory, Mich. 48137. Phone 486-2539. x47

FOR SALE—Small, gentle, registered, half-Arabian mare and grade Arabian gelding, both with tack. Ph. 229-4097 evenings. x261f x261f

DALTON BUILDING CO.

LICENSED MASTER PLUMBER

New Work and Repair
PHONE 475-1150

31

SECURITY GUARDS

Chelsea, Manchester
Whitmore Lake areas.
Phone 761-5315
for appointment,
or apply at
290 S. Wagner Rd.
Ann Arbor

SANFORD SECURITY SERVICE, INC.

x451f

HAPPY NEW YEAR

8-BEDROOM farm house, 1.35 acres, 10 minutes from Manchester, near blacktop road. Many trees.

3-BEDROOM RANCH on 2½ acres of land. Large, new family room with fireplace, modern kitchen, 1½ baths, attached 2½-car garage. Located 2 miles south of Manchester. See this one today!

Spear & Associates,

MEN & WOMEN PART-TIME
Earn \$50 or more week-end.
Call 669-0490 during days or Tues-
day nights. Co. D, 156 Signal Bn.,
Michigan National Guard. x31

YES

WE ARE MAKING LONG-TERM FARM REAL ESTATE LOANS

SEE US

Federal LAND BANK Association

P. O. Box 1006
Ph. 769-2411 3645 Jackson Rd.
Ann Arbor, Mich. 48103

WANT ADS

LEHMAN WAHL

Land Appraisal Residential and Farm

17037 West Austin Rd
Manchester, Mich.
Area Code 313
428-8886

26f

CALL FRANK for all your carpet cleaning jobs, morning or week-end. Needs only 3 hours to dry. Only 10¢ per square foot. Phone now for free estimate, 761-4323. All work guaranteed. x31f

Fireplace Builder

Field stone mason, block and brick mason, tuck pointing.
FREE ESTIMATES
Call 475-8025 after 3 p.m.

Patrick Grammatico

x401f

HAMMOND ORGAN teachers wanted to teach in their own homes. Call Grinnell Brothers, Ann Arbor, 662-5687. x41f

LOTS

FOR SALE

IN CHELSEA

ON

JUNIOR HIGH

PROPERTY

Will Build

To Suit

CALL

WEBER HOMES

475-2828

SUITABLE FOR DUPLEXES OR SINGLE FAMILY

x33

MANCHESTER

BUILDING SITE in area out of village (1) Building including furnished apartment and beauty parlor and equipment. (2) Building has apartment with first-floor rented beauty salon. (3) Income—Three apartments one block from Main. Terms, Good investment. (4) Acreage—Some suitable for winter sports.

Fahey Realty

15554 Fahey Rd., 428-8748
112 S. Washington, 428-8348

31

FOR SALE—1969 Ambassador SST, Vinyl top, Michelin radial tires, 15 miles per gallon, \$695 or best offer. Call Jack, 449-4605. x30

WANT ADS

NOW

Full Time

Complete

Body Shop

Service

Stop in For An Estimate

PALMER FORD

222 S. Main St.
475-1301

271f

CUSTOM

BUILDING

LICENSED & INSURED

FREE ESTIMATES

TOTAL

CONSTRUCTION

SERVICES

—Residential, commercial and industrial
—Garages
—Remodeling - Additions
—Aluminum Siding
—Roofing
—Trenching

SLOCUM

CONTRACTORS

& BUILDERS

Serving Washtenaw County

For Over 20 years

20700 OLD US-12

CHELSEA

Phone 475-8821 or 475-7611

221f

Pine Haven Saddlery

4534 Dexter Townhall Rd.

Phone Dexter 428-4288

Complete line of English and western equipment. 10% discount to all 4-H Club members.

Store Hours: Mon.-Sat., 9-9

Sunday, 10-9

x521f

NEW and REMODELING

Residential

Carpenter Contractor

M. A. LAWRENCE

1-517-522-4364

x71f

THE LITTLE

FLOWER SHOP

3451 Waltrous Rd., Chelsea

Phone GR 5-8508

We Deliver and Wire

Flowers, Corsages, Arrangements

and Plants.

Weddings and Funerals.

841f

BUILDERS—House and barn roofing, all types of roof repairs, aluminum storm windows and doors, aluminum siding and gutters, awnings, porch enclosures, garage and room additions, cement work. Call Joe Hayes for free estimates, Manchester 428-8820. x161f

SHOES FOR REPAIR picked up and delivered every Monday at Parish's Cleaners, 113 Park St., Chelsea, Mich. x161f

SEAMLESS ALUMINUM eaves-troughs installed and guaranteed. White and colors available. For free estimates, call Rick Kleinschmidt, R. D. Kleinschmidt Co., 428-8836. x461f

Sand Gravel

KLINK EXCAVATING

Bulldozer - Backhoe

Road Work - Basements

Trucking - Crane Work

Top Soil - Demolition

Drainfield - Septic Tank

Trenching, 6" up

Industrial, Residential, Commercial

CALL 475-7681

181f

Headquarters for

RED WING

WORK SHOES

Foster's Men's Wear

401f

MUNITH AUCTION—100 Main St., Munith, Mich. Auction every Sunday, 8 p.m. Danny Fleming, auctioneer. x121f

STOCKBRIDGE, 13 acres, commercial, on M-52. (517) 861-8144. x841f

WILL BABY-SIT in my home for children after school.

WANT ADS

Gem Travel Trailers and Campers

PICK UP COVERS

4" ————— \$100.00
26" ————— \$179.00 and up

Triangle Sales

Chelsea 475-4802

401f

CAR RENTAL by the day, week-end, week or month. Full insurance coverage, low rates. Call Lyle Chriswell at Palmer Motor Sales, 475-1801. x251f

Complete

Body Repair

Service

Bumping - Painting
Windshield and Side Glass Replacement
Free Pick-up & Delivery
Open Monday Until 9
CONTACT DON KNOLL
FOR FREE ESTIMATE

Village

Motor Sales, Inc.

IMPERIAL - CHRYSLER

DODGE - PLYMOUTH

Phone 475-8661

1185 Manchester Rd., Chelsea

Hours: 8 a.m. to 6 p.m.

Tues. thru Fri. Until 9 Monday.

9 a.m. to 2 p.m. Saturday

x141f

REPAIR SERVICE for household refrigerators, freezers and garbage disposers. Call Bill, 426-5814. x141f

FOR REAL DOLLAR SAVINGS be sure and see us before you buy any new or used car. Palmer Motor Sales, Inc. Your Ford Dealer for over 50 years. x21f

WANTED TO RENT—House to rent, in Chelsea School District. References. Husband is cabinet maker; specialty remodeling. Will repair or remodel as part payment if owner desires. Negotiable. Phone 475-1845. x151f

DEPENDABLE TREE SERVICE— Cutting and removing. Call 426-4110. x191f

BUYER OF

RAW FURS

J. Wentzel, 7581 Dexter-Pinckney Rd., Dexter, 428-8856 or 426-8940. x33

WORKING COUPLE desire apt. in Chelsea community. No children. Ph. 475-8407 or 971-0069. x241f

GIACINTO DRYWALL CO.— Licensed contractor, winter prices now in effect. Free estimates. Ph. 878-3901. x241f

CAVANAUGH LAKE lake property, 4-bedroom, 2-bath, fireplace, 3-car garage, excellent beach. Immediate occupancy. Ph. 475-8249 or 475-2597. x29

INVERNESS

GOLF COURSE

LOT

FOR SALE

Will Build

To Suit

WEBER HOMES

475-2828

Also

Nine 1-acre

Lots

Covered with

Pine Trees

x33

FOR SALE—Alaskan Malamute puppy, 9 weeks, \$35. 475-8984 after 1 p.m. x30

A New Model Home

With 1,850 sq. ft., country kitchen, beamed ceilings, 1½ baths, family room, carpeted, in Chelsea and ready for occupancy.

MACHNIC

CUSTOM HOMES

Model - 475-1271, days

or 428-4776, evenings.

30

HAULING

We move items of various sizes and conditions by ¼ ton pick-up as well as ?? Your valuable pieces will be protected from the elements. Willing to consider any distance.

F & F Hauling Co.

428-4877 - 668-2700

x32

WANT ADS

ELECTRICAL WIRING of all types New and rewiring. Ph. 426-4853. x201f

EVINGER REAL ESTATE, Alpine St., Dexter. Phone 426-8518. x181f

SEE US for transit mixed concrete. Klumpp Bros. Gravel Co. Phone Chelsea 475-2530, 4920 Loveland Rd., Grass Lake, Mich. x401f

TRAVEL TRAILERS—13-ft. and up; 10x55 ft. trailers. John R. Jones Trailer Sales, Gregory, Mich. Phone 498-2655. x431f

WANTED—Carpentry work, any type. Charles Romine. Ph. 475-7474. x351f

FOR SALE—1 acre building sites, Chelsea area. Phone 475-2828. x161f

PIANO TUNING, Chelsea and area. Facilities for reconditioning and rebuilding. Used piano sales; reconditioned grand and verticals. E. Ecklund. 426-4429. x501f

ASPHALT PAVING

Driveways - Parking Areas
Landscaping - Site Work

PREVO EXCAVATING CO.

(517) 851-8603 or (313) 453-1027

x431f

FOR SALE—Indian cents, postcards, books, foreign coins, Australian opals, and other articles. Lawrence E. Guinan, 1571 Sugar Loaf Lake. Call 475-2317. x371f

D&G Allen Excavating

Septic Tanks and Drainfields

Back Hoe and Dozing

Sand, Gravel and Topsoil Hauled

Phone (517) 851-8386

or (517) 851-8278

x431f

WANT TO RENT a house or duplex with 2 or 3 bedrooms. Have 2 children, husband willing to work on house. Ph. 475-7732 after 5. x30

MANAGER MOVING to area desire home to rent for wife and 3 children. Needed in January. Ph. 475-1386, ask for Peter Vogeler. x30

FOR SALE—1970 Chevrolet Impala, 4-door hardtop, excellent condition, \$1,250. Ph. 475-8005. x291f

LARGE 3-ROOM upstairs apt. Utilities furnished. Suitable for 2. Ph. 475-7486. 2 miles north of Chelsea. x30

11955 Elmdale

A home for all seasons. Small, 2 bedroom, newly remodeled, with lake privileges. Pleasant Lake.

515 Territorial St.

Bring your toolbox, as this home needs some work on it. 3 bedrooms, 2-story, full basement. Located in the village of Manchester.

8550 Fay Lake Rd.

Large farm home, presently used as a convalescent home. Located 10 minutes west of Manchester. 8 bedrooms, 2 baths, marble fireplace. Could be made into apartments for added income.

19426 Pleasant Lake Rd.

240 acres, some of which is wooded. Large older home in excellent condition, with open stairway. Custom kitchen and 8 bedrooms.

Spear & Associates

Inc.

REALTORS

122 W. Main St., Manchester

Phone 428-8046

30

FOR RENT—Very large one-bedroom apartment for 1 or 2. Carpeted, newly decorated, private entrance with large entrance hall. \$100 deposit and references required. Shown by appointment. Ph. 475-1845. x31

WANTED TO TRADE—Single bed for youth bed. Call 475-2180. x31

FOR SALE—Fish shanty, good condition. Ph. 475-1287. x30

HELP WANTED—Typist, for 10 weeks, 8:15 a.m. to 4:30 p.m., 5 days. Pleasant surroundings, nice folks to work with. Vitality Seed Co. Ph. 662-6542. x31

PLAY PEN, like new, net-type, \$15. Baby walker, like new, \$5. Big coffee table, \$5. Call 475-8482. x30

FOR RENT—12x60' 2-bedroom mobile

Attention, Pampered Pets!

Now you can look like you stepped off the corner of "Dog World." No more sitting in a hot cage for hours. You can be out in 1½ to 2 hours while your "people" do their shopping around town.

STOCKBRIDGE ANIMAL CLINIC

is now accepting appointments for this complete grooming service. Ask your "people" to make your appointment and start out the New Year beautiful.

CALL (517) 851-7100

NOTICE

The Annual Meeting of Members of the
CHELSEA COMMUNITY CHEST

Will Be Held

WEDNESDAY, JANUARY 16, 1974

at 7:30 p.m. in the Second Floor Council Room
of the Municipal Building, Chelsea, Mich.

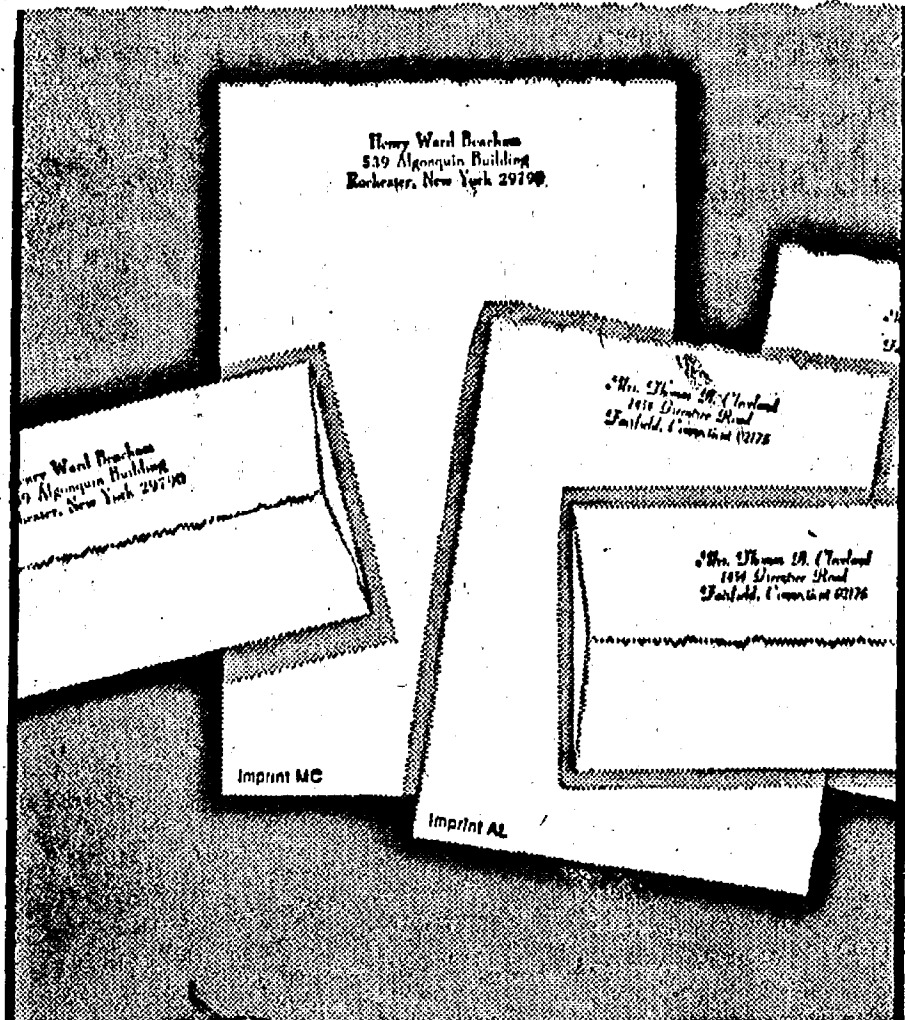
Business of this meeting will include:

- ★ Election of Officers
- ★ Presentation of the annual reports and any other business that may come before the meeting.

Everyone who made a contribution during the 1973 campaign for funds is considered a member eligible to vote and is urged to attend.

PAUL FRISINGER, President
JAMES HOFFMEYER, Secretary

The Chelsea Standard SAVE 50%



January Sale

Rytex Deckle Edge Vellum
Personalized Stationery

Sale Price **\$5.00** (regularly \$10.00)

Such good taste . . . Such good value. Your name and address custom-printed on genuine vellum paper that is subtly deckle-edged in the manner of fine books. Paper choice of Windsor White, Antique Grey or Wedgwood Blue. Choice of print styles as shown with ink color of black or blue. 150 Princess sheets, 100 envelopes or . . . 100 King size sheets, 100 envelopes

Special Bonus Value:

50 extra, unprinted, sheets for use as second pages
... only \$1.00 with order.

MAIL ORDER COUPON

THE CHELSEA STANDARD
CHELSEA, MICHIGAN 48118

DECKLE EDGE VELLUM.....boxes at sale price of \$5.00 per box

*SPECIAL BONUS.....(check) Include 50 matching, unprinted, sheets for only \$1.00 more!

Check ☐ Princess White (9400) ☐ King White (9100)
your ☐ Princess Blue (9450) ☐ King Blue (9150)
choice ☐ Princess Grey (9460) ☐ King Grey (9160)

Ink: ☐ Black Ink ☐ Blue Ink Imprint ☐ Imprint MC ☐ Imprint AL

Imprint Name.....

Street.....

City.....State.....Zip.....

Ordered by.....

Street.....

City.....State.....Zip.....

+ Services in Our Churches +

ZION LUTHERAN CHURCH
Corner of Fletcher, Waters Rds.
(Rogers Corners)

The Rev. John R. Morris, Pastor

Saturday, Jan. 12—

9:00 a.m.—Ninth grade youth instruction.

10:00 a.m.—Seventh grade youth instruction.

Sunday, Jan. 13—

9:00 a.m.—Sunday school.

10:15 a.m.—Worship.

Installation of all newly-elected officers.

7:00 p.m.—Annual congregational meeting.

CONGREGATIONAL CHURCH
(United Church of Christ)

The Rev. Carl Schwarm, Pastor

Sunday, Jan. 13—

10:00 a.m.—Sunday school.

11:00 a.m.—Worship service.

6:00 p.m.—Confirmation class pot-luck.

7:30 p.m.—Annual meeting.

Monday, Jan. 14—

7:00 p.m.—Choir.

ST. THOMAS
EVANGELICAL LUTHERAN

Ellsworth and Haab Rds.

The Rev. Daniel L. Mattson, Pastor

Sunday, Jan. 13—

9:45 a.m.—Sunday school.

11:00 a.m.—Worship service.

Paul G. Meyer, guest pastor.

Wednesday, Jan. 16—

10:00 a.m.—Bible study.

8:00 p.m.—Choir rehearsal.

ST. BARNABAS
EPISCOPAL CHURCH

20550 Old US-12

The Rev. C. Walton Fitch, Vicar

Telephone 426-8815

The Rev. J. F. Beaumont, B.S.P.

Telephone 475-2003

Every Sunday—

9:15 a.m.—Holy Communion, first, third and fifth Sundays.

9:15 a.m.—Morning Prayer, second and fourth Sundays.

9:30 a.m.—Sunday school.

10:15 a.m.—Choir rehearsal.

Every Thursday—

7:30 p.m.—Holy Eucharist.

VILLAGE UNITED METHODIST
CHURCH OF WATERLOO

8118 Washington St.

The Rev. Altha Barnes, Pastor

Every Sunday—

10:00 a.m.—Sunday school.

ST. JOHN'S
(UNITED CHURCH OF CHRIST)

Rogers Corners

The Rev. Richard Campbell, Pastor

Every Sunday—

9:30 a.m.—Sunday school.

10:30 a.m.—Worship service.

OUR SAVIOUR LUTHERAN
CHURCH

The Rev. William H. Keller, Pastor

1515 S. Main, Chelsea

Each Sunday—

9:00 a.m.—Sunday school.

9:00 a.m.—Adult Bible class.

10:30 a.m.—Worship service.

FIRST UNITED
PRESBYTERIAN CHURCH

Unadilla

The Rev. T.H. Liang

Every Sunday—

9:45 a.m.—Sunday school.

11:00 a.m.—Worship service.

NORTH SHARON
BIBLE CHURCH

Sylvan and Washburne Rds.

The Rev. William Enslen, Pastor

Every Sunday—

10:00 a.m.—Sunday school.

(Nursery will be available.) Junior church classes.

11:00 a.m.—Worship service.

6:00 p.m.—Senior High Youth meeting. Youth Choir.

7:00 p.m.—Evening worship service. (Nursery available.)

Every Wednesday—

7:00 p.m.—Bible study and prayer meeting. (Nursery available.)

Bus transportation available: 428-7222.

LOSE UGLY FAT
OR PAY NOTHING

Start losing weight today OR MONEY BACK. MONDEX is a tiny tablet that will help curb your desire for excess food. Eat less, weigh less. Contains no dangerous drugs and will not make you nervous. No strenuous exercise. Change your life . . . start today. MONDEX costs \$3.00 for a 30-day supply and \$5.00 for twice the amount. Lose ugly fat or your money will be refunded with no questions asked by:

CHELSEA DRUG STORE

Chelsea - Mail Orders Filled

FIRST UNITED
METHODIST CHURCH

The Rev. Clive Dickens, Pastor

Saturday, Jan. 12—

9:00 a.m.—Cluster breakfast meeting at Sharon United Methodist church, Manchester.

10:00 a.m.—Cherub Choir.

10:30 a.m.—Junior Choir.

Sunday, Jan. 13—

9:00 a.m.—Church school, nursery through adult.

10:00 a.m.—Worship service.

Guest speaker, Richard Barker, missionary to Japan. Pot-luck luncheon will follow.

Wednesday, Jan. 16—

8:45 p.m.—Youth Choir.

8:00 p.m.—Chancel Choir.

ST. MARY CATHOLIC CHURCH

The Rev. Fr. David Philip Dupuis, Pastor

Mass Schedule

Every Sunday—

4:00-5:00 p.m.—Confessions.

7:00 p.m.—Mass.

Immediately after 7 p.m. Mass—Confession.

Every Sunday—

Winter schedule

8:00, 10:00, 12:00 noon—Mass.

Summer schedule

7:00, 9:00, 11:00 a.m.—Mass.

GREGORY BAPTIST CHURCH

The Rev. Grant Lapham, Pastor

Every Sunday—

10:00 a.m.—Worship.

10:00 a.m.—Sunday school.

7:30 p.m.—Evening worship service.

IMMANUEL BIBLE CHURCH

145 E. Summit St.

The Rev. LeRoy Johnson, Pastor

Every Sunday—

9:45 a.m.—Sunday school, nursery provided.

11:00 a.m.—Morning worship, nursery provided.

Every Wednesday—

7:30 p.m.—Family hour, prayer meeting and Bible study.

First Sunday of Month—

7:00 p.m.—Communion service.

10:00 a.m.—Sunday school.

FIRST CHURCH OF CHRIST,
SCIENTIST

1883 Washtenaw Ave., Ann Arbor

Every Sunday—

10:30 a.m.—Sunday school; morning service.

NORTH LAKE
UNITED METHODIST CHURCH

The Rev. J. William Todd, Pastor

Every Sunday—

9:00 a.m.—Worship service.

Nursery available.

10:15 a.m.—Sunday school.

Every Wednesday—

4:00 p.m.—Children's Choir.

7:00 p.m.—Adult Choir.

SALEM GROVE
UNITED METHODIST CHURCH

3320 Notten Rd.

The Rev. J. William Todd, Pastor

Every Sunday—

10:00 a.m.—Sunday school.

11:00 a.m.—Worship service.

BETHEL EVANGELICAL AND
REFORMED CHURCH

(United Church of Christ)

Freedom Township

The Rev. Roman A. Reineck

Every Sunday—

10:00 a.m.—Worship.

FIRST ASSEMBLY OF GOD

The Rev. Thode B. Thodeson, Pastor

Every Sunday—

9:45 a.m.—Sunday school.

11:00 a.m.—Worship service.

Nursery care available during all services.

6:00 p.m.—Junior and Senior Baptist Youth Fellowship.

7:00 p.m.—Evening service.

Every Wednesday—

7:00 p.m.—Bible study and prayer meeting.

METHODIST HOME CHAPEL

The Rev. R. L. Clemans, Chaplain

Every Sunday—

8:45 p.m.—Worship service.

CHURCH OF CHRIST

13881 Old US-12, East

David A. Rushlow

Every Sunday—

10:00 a.m.—Church school.

11:00 a.m.—Worship service.

Nursery will be available.

6:00 p.m.—Worship service.

Every Wednesday—

7:30 p.m.—Bible Study.

BAHA'I FIRESIDE

Every Thursday—

8:00 p.m.—At the home of Toby Peterson, 705 S. Main St. Anyone wishing to learn about the Baha'i faith is welcome.

CHELSEA MEDICAL CENTER

Every Other Wednesday—

1:30 p.m.—Worship service.

THE "PROTEIN SPICES"

What are "protein spices?" The term includes red pepper, chili, curry powder, marjoram, sage, mustard, poultry seasoning, thyme and rosemary, according to the U. S. Department of Agriculture. Such spices are most often used with meat, poultry, fish, egg and bandishes.

Subscribe today to The Standard!

NOTICE

Beginning Jan. 11, 1974, new barber prices are as follows:

HAIR CUT\$3.75

FLAT TOP\$4.00

Children under 12\$3.50

SHAVE\$3.75

SHAMPOO\$3.00

ALL CHELSEA
BARBER SHOPS

MILK

Teenagers think that milk tastes

"just terrific"

Socializing, alone, or with the gang, anytime is the right time for a teenager to help himself to a delicious glass of healthful milk.



There's a world of health in a glass of milk!

Hickory Ridge Farm Dairy

(Successor to Weinberg Dairy)

Stockbridge Mich.

Phone (517) 851-3000

NEW YEAR RESOLUTIONS

Last week we presented the first 10 of the 20 JOHN BIRCH RESOLUTIONS for your consideration as we begin a new year with vital implications for our future. The final 10 are offered below. All 20 resolutions are available, with complete explanation, in pamphlet form. Free copies are available for the asking.

JOHN BIRCH RESOLUTIONS

11. I shall always participate in charity for the needy, to the full extent that my resources and other responsibilities will permit.
12. I shall always do what I can to prevent cruelty, whether to human beings or to any living thing; and to be guided by a genuine compassion for all mental or physical suffering by man or beast.
13. I shall always recognize my responsibilities for the physical, mental, and moral training of children entrusted to my care as parent, teacher, or guardian.
14. I believe, emphatically and earnestly, in justice as an ideal which every social organization should strive to provide, through its laws, customs and attitudes, for all human beings. The only deviations from justice should be on the side of mercy, in situations where mercy is dictated by a humane public conscience.
15. I shall never accept the satanic sophistry that the end justifies the means. Nor the parallel and equally fraudulent theory presented as "situation ethics."
16. I shall not yield to any of the specific forms of immorality which the enemies of God and man are now trying to get widely practiced and accepted, especially by our young people, as fashionable, or "modern." And I shall do my utmost to have all of these grossly immoral practices understood, resisted, and made the object of deserved contempt by young and old alike.
17. I shall always be industrious.
18. I shall try hard to preserve a sense of moderation and balance with regard to all of my appetites, desires, and expectations.
19. I always intend to maintain a spirit of sincere humility concerning my own position and deeds and influence, in connection with all organizations, undertakings, and activities of which I am a part.
20. I shall always try to have, and to demonstrate, the courage that can properly be expected of me, in all situations where courage is required.

CHELSEA DEXTER CHAPTER
THE JOHN BIRCH SOCIETY

Box 92, Chelsea, Mich. 48118



BOWLING NEWS



Chelsea Nite Owl League

Standings as of Jan. 7

	W	L
Chelsea Grinding	55	41
Sylvan Center	53	53
Mark IV Lounge	71	55
Chelsea Cleaners	70	56
Palmer Motor Sales	70	56
Schneider's Grocery	69	57
Lloyd Bridges Chevrolet	65	58
Oddballs	66	60
Village Motor Sales	65	61
Jim's Taxidermy	64	62
Seltz's Tavern	61	60
Ben's Arco	61	63
Dexter Automatics	58	63
Bauer Builders	58	70
Chelsea Lumber	56	70
Washtenaw Crop Service	50	76
Linear Corp.	49	77
Wall's Barber Shop	40	86

600 series: G. Lawrence, 630; W. Moss, 616; J. Ladley, 600.

210 and over series: G. Lawrence, 222, 233; L. Bauer, 211; G. Grannis, 218; R. Bauer, 214; J. Parks, 211; W. Moss, 213, 212; W. Moats, 213; R. Beason, 213; G. Knickerbocker, 210; J. Ladley, 211, 210; J. Verwey, 218; J. Harook, 222.

Rolling Pin League

Standings as of Jan. 8

	W	L
Kookie Cutters	42 1/2	25 1/2
Egg Beaters	42	26
Brooms	41	27
Coffee Cups	40	28
Spooners	39	29
Dish Rags	38	32
Grinders	35 1/2	32 1/2
Pots	34	34
Mixers	28 1/2	39 1/2
Jolly Mops	25	43
Kitchen Kapers	23	45
Moppper Uppers	21 1/2	46 1/2

425 and over series: D. McAllister, 448; L. Northrop, 429; J. Roe, 465; K. Van Demark, 451; J. Edick, 428; E. Williams, 428; P. Borders, 474; S. Parker, 470; M. Gross, 438; M. Vassas, 436; P. Harook, 455.

145 and over games: G. Weiner, 148-147; M. Gross, 164; G. Klink, 166; M. Vassas, 149, 189; P. Harook, 167, 151; P. Borders, 151, 178; S. Parker, 159, 164, 147; D. Dirlam, 148; K. Del Prete, 145; D. Machnik, 150; J. Edick, 155; E. Williams, 163; L. Northrop, 161, 163; A. Hadley, 154; J. Roe, 192; K. Van Demark, 152, 162; J. Rabblitt, 168; E. Reynolds, 155; C. Shepherd, 166; N. Kilpatrick, 168; J. Shepherd, 155; V. McNuff, 148, 152; J. Priest, 152; A. Foster, 150; D. McAllister, 160, 146.

Chelsea Lanes Mixed

Standings as of Jan. 14

	W	L
Bushwackers	76	50
Meabon's	75	51
Fitzsimmons Excavating	75	51
Loctite	72 1/2	53 1/2
Four Roses	70	56
Ann Arbor Centerless	69 1/2	56 1/2
Chelsea Lanes	69	60
Marsh & Verwey	68	62
The B's & D's	63	63
Hopefuls	62 1/2	63 1/2
Happy 4	60	66
Ann Arbor Eagles	60	68
Wilson & McDonald	60	68
G & J. Ranch	59	68
Doug's Painting	51 1/2	67
The Four of Us	51	75
Bollinger Sanitation	50	76
Jarvis & Neuman	43	76

Team, high series: Hopefuls, 2,443.

Women, high game: T. Steina-way, 203.

Men, high game: S. Wilson and W. Makowski, 218.

Women, 150 games: C. Crawford, 188, 155; L. Alexander, 162, 161; B. Torrice, 160, 154, 152; A. Rawson, 158; T. Steina-way, 203; J. Norris, 169, 183; D. Keezer, 164; E. Packard, 175, 170; D. Cozzens, 151; L. Jarvis, 159; W. Trapp, 166; A. Steina-way, 150; H. Morgan, 167, 179; M. Sutter, 201, 194, 150; J. Stoll, 181, 151; L. Gilmore, 165.

Men, 175 games: T. Marsh, 177; J. Verwey, 187, 196; S. Wilson, 216, 188; D. Longworth, 178; D. Alexander, 180, 178; A. Torrice, 175; R. Rawson, 212, 162; W. Steina-way, 183; W. Cozzens, 178; S. Hopkins, 215, 188, 180; T. Wisniewski, 188, 212; K. Vassas, 177; W. Makowski, 216, 179; D. Speer, 195; J. Trapp, 205; E. Vassas, 181, 193; H. Stoll, 185.

Women, 425 series: C. Crawford, 451; B. Marsh, 425; L. Alexander, 443; B. Torrice, 475; T. Steina-way, 454; J. Norris, 498; E. Packard, 435; D. Cozzens, 428; D. Speer, 431; H. Morgan, 457; M. Sutter, 545; J. Stoll, 476; L. Gilmore, 442.

Men, 500 series: T. Marsh, 511; J. Verwey, 531; S. Wilson, 532; D. Alexander, 518; R. Rawson, 536; T. Wisniewski, 551; S. Hopkins, 583; W. Makowski, 562; D. Speer, 536; J. Trapp, 515; E. Vassas, 532.

Charlie Brown & Snoopy's Friends Peanut League

Standings as of Jan. 5

	W	L
All Stars	22	14
Super Strikers	21	15
Pin Pushers	20	16
Fire Balls	16	20
Pin Crackers	14 1/2	21 1/2
Sore Thumbs	12 1/2	23 1/2

Games 70 and over: R. Lorenzen, 109, 87; D. Alexander, 72, 86; A. Fletcher, 78, 81; D. Darrow, 82; P. Hoffman, 84, 108; J. Marshall, 80; E. Bristle, 82; K. Fletcher, 85; J. Owings, 93, 88; R. Robeson, 78; M. Bulick, 101, 84; D. Dettling, 100, 83; K. Noll, 77; K. Tobin, 97; T. Greenleaf, 114, 85; R. Krichbaum, 113, 80; J. Rowe, 105, 91; B. Roe, 76; J. Krichbaum, 91, 116.

Series 100 and over: R. Lorenzen, 196; D. Alexander, 158; K. Thurnk, 104; A. Fletcher, 159; D. Darrow, 146; J. Hoffman, 115; P. Hoffman, 190; D. Waldyke, 107; J. Marshall, 117; E. Bristle, 143; K. Fletcher, 154; D. Rowe, 122; J. Owings, 181; R. Robeson, 158; M. Bulick, 185; D. Dettling, 183; K. Noll, 127; J. Verwey, 133; K. Tobin, 184; T. Greenleaf, 193; R. Krichbaum, 193; J. Rowe, 196.

Leisure Time League

Standings as of Jan. 3

	W	L
Four Stooges	48	16
Unpredictables	45	19
Slowpokes	41	23
Misfits	39	25
Sugar Loafers	36 1/2	27 1/2
Roadrunners	32 1/2	31 1/2
Rug Rats	25	39
Highly Hopefuls	21 1/2	42 1/2
The G's	18	46
The Lakers	13 1/2	50 1/2

Games 140 and over: G. Reed, 159, 150; B. Robinson, 162; J. Stapish, 150, 140; M. Usher, 143, 186, 161; D. Hafner, 153, 189; B. Mull, 160; D. Thompson, 149; G. Wheaton, 148, 185, 158; S. Thurkow, 149; M. Dault, 178; D. Dault, 188, 170, 194; P. Wirth, 148, 162; J. Anderson, 143; C. Engler, 168; Shirley Friday, 178; M. O'Donnell, 154; S. Wolfe, 153.

500 series: D. Dault, 552.

Telephone Your Club News To 475-1371

JET SPRAY
CARPET CLEANING
Holiday Special Rates Still in Effect
Phone John Lixey at 761-3025 or 475-1509

Have Lunch Today
at the
MARK IV LOUNGE
PHONE 475-8141
1198 M-52 CHELSEA

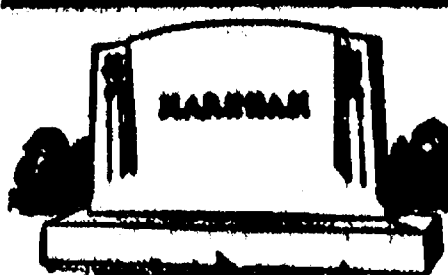
Have A Ball
GO BOWLING THIS WEEKEND!
Open Bowling Schedule
Sunday 12 noon - 8:00 p.m.
Monday 10:30 a.m. - 6:30 p.m.
Tuesday 9:00 a.m. - 6:30 p.m.
Wednesday 10:30 a.m. - 6:30 p.m.
Thursday 10:00 a.m. - 6:30 p.m.
Friday 10:30 a.m. - 6:30 p.m.
Saturday 11:00 a.m. - midnight
18 Astroline Lanes - Billiards & Air Hockey
LOUNGE
CHELSEA LANES, Inc.
PHONE 475-8141
1189 M-52 CHELSEA

Tri-City Mixed League

Standings as of Jan. 4

	W	L
Jiffy Mixes	46	28
Craft Appliance Co.	43	29
Real Estate One	42	30
Jiffy Market	40	32
E. P. Smith Pallet Co.	39	33
3-D Sales & Service	39	33
Euler & Swersky	39	33
Foor Mobil	39	33
Jerry & Doug's Quality	37	35
Sprague Buick & Olds	36 1/2	35 1/2
Chelsea Cleaners	36	36
Portage Hardware	36	36
Stivers	35	37 1/2
The Lively Ones	34 1/2	37 1/2
4-W's	30	42
Hoover's Hustlers	29	43
4-B's	29	43
Dettling & Gaddis	18	54

500 series, men: S. Cavender, 519; F. Cooper, 504; D. Dettling, 507; R. Pike, 508; P. Fletcher, 514.



MAUSOLEUMS ★ MONUMENTS
BRONZE TABLETS ★ MARKERS

BECKER MEMORIALS
6033 Jackson Road
ANN ARBOR, MICHIGAN

SPORTS CORNER

AVERAGED 29.0 POINTS AND 22.4 REBOUNDS HIS SENIOR HIGH SCHOOL YEAR.



BILL WALTON

THE BIG REDHEAD FROM LA MESA, CALIFORNIA IS HELD BY MANY AS BEST COLLEGE CENTER OF ALL TIME. 6'-11" STAR HAS LED UCLA BRUINS TO NCAA CROWNS IN 1972-73, WAS ALL-AMERICAN AND PLAYER OF THE YEAR BOTH SEASONS, SUFFERING FROM TENDINITIS IN BOTH KNEES, BILL STILL LED UCLA TO 75-GAME WIN STREAK.

W. Griffith, 502; A. Sannes, 566; H. Swersky, 507; R. V. Worden, 532.
200 games, men: C. Dettling, 207; A. Sannes, 214; J. Stoffer, 209; R. V. Worden, 213.
450 series, women: G. Cooper, 486; E. Dettling, 453; G. Dettling, 532.

486; D. Fouty, 460; C. Hodges, 484; N. Miller, 457; J. Mock, 450; B. Parish, 450; D. Swersky, 513.
150 games, women: K. Chapman, 158, 151; E. Dettling, 178.

Junior House League

Standings as of Jan. 3

	W	L
Ann Arbor Bldg. Supply	84	35
Chelsea Lanes	82	37
3-D Sales & Service	80	39
Smith's AAA	76	43
Dana Demons	78	43
Wolverine No. 1	70	49
Inverness Inn	67	52
Mark IV	65	54
Jiffy Mix	63	56
Doug's Painting	63	56
Wolverine No. 2	58	61
Boyer Automotive	56	63
Rockwell International	47	72
Washtenaw Engineering	47	72
Michigan Bell	45	74
Slocum Const. & Building	44	75
Team No. 5	31	88
Linear Corp.	17	102

LAMINATOR THERMAL

HOODED SWEAT SHIRT

Water Repellent - Red or Navy

\$8.95

STRIETER'S MEN'S WEAR

"The Place To Go for Brands You Know"

Want to sell a car? Try a Standard Want Ad!

REAL ESTATE ADVICE

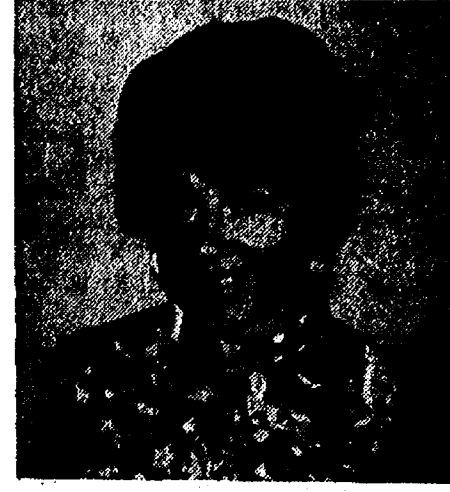
RESIDENTIAL PROPERTIES
COMMERCIAL - INDUSTRIAL
FARMS
VACANT LANDS

SPEAR & ASSOCIATES, INC.

REALTORS

122 W. Main, Manchester

Ph. 428-8388



MARIA LEHR

428-8182

HIGHEST REGULAR PASSBOOK SAVINGS INTEREST

1 1/4%

PER ANNUM
EFFECTIVE ANNUAL RATE 5.35%

DAILY INTEREST

NO MINIMUM DEPOSIT—WITHDRAW ANYTIME!

AND FOR YOUR LONG TERM INVESTMENT DOLLAR, THESE HIGH PAYING PASSBOOK CERTIFICATE ACCOUNTS

6 1/2%
PER ANNUM
FOR 12 MONTHS ON \$1000 OR MORE
EFFECTIVE ANNUAL RATE 6.66%

6 3/4%
PER ANNUM
FOR 30 MONTHS ON \$1000 OR MORE
EFFECTIVE ANNUAL RATE 6.97%

7%
PER ANNUM
FOR 48 MONTHS ON \$1000 OR MORE
EFFECTIVE ANNUAL RATE 7.19%

Federal regulations permit withdrawals from savings certificates before maturity, provided interest on amount withdrawn is reduced to the passbook rate at the time of withdrawal and up to 90 days interest is forfeited.

ALL DEPOSITS INSURED TO \$20,000 WITH THE FSIC

ANN ARBOR FEDERAL SAVINGS

the savings and loan specialists

ANN ARBOR OFFICES: Downtown, Liberty at Division; Westside, Pauline at Stadium; Eastside, Huron Parkway at Platt; Northside, Plymouth at Nixon; CHELSEA—Main Street near Old U. S. 12; DEXTER—8081 Main Street.
Member: Federal Home Loan Bank System • Federal Savings and Loan Insurance Corporation

SEC ROUND-UP:

Chelsea Drops into Third With Overtime Loss to South Lyon

Chelsea 69, South Lyon 71

Chelsea dropped back into the gang of third place-tied teams in the Southeastern Conference Friday night with a disheartening 71-69 overtime defeat at the hands of South Lyon.

Chelsea, leading with seven seconds remaining in regulation time, saw Lion Tony Kern hit for a short jumper to tie the contest, then repeat with 59 seconds left in overtime to put the South Lyon squad in the lead.

Chelsea's last-ditch effort with one second remaining, a Dave Alber shot from the top of the key, missed its mark and dropped the local squad's record to 3-2 in the SEC. The Bulldogs share third with Brighton and South Lyon.

Leading scorer for the victorious Lions was senior Kern, with 21. Tim Treado led the Bulldogs scorers with 22, followed by Alber with 20.

Saline 81, Dexter 52

League-leading Saline, meanwhile, trounced Dexter's Dreadnaughts, 81-52, in a game that was, for a while, reasonably close.

Until two minutes prior to halftime Dexter was running within a respectable seven points of the league-leaders, but the Hornets' turnover squad began to do their stuff, boosting the lead, primarily on Dreadnaught errors, to 39-26 at the half.

Tim Slepisky led Hornet scorers with 19 points.

Milan 74, Lincoln 49

Alert defense and a tough press did the job for Milan once again, as they walked all over the Lincoln Railsplitters, 74-49, and upped their second-place record to 4-1 in the SEC.

Stan Joplin starred in the Milan effort, turning in 27 points and grabbing 19 rebounds.

Lincoln, mired in a tie for fourth place with Dexter, dropped to a 1-4 in the SEC.

Brighton 64, Novi 44

Brighton, moving up in the SEC world to a third place tie with Chelsea and South Lyon, mauled the hapless Novi Wildcats, 64-44, in a game that saw 11 assorted Brighton players launch themselves into the scoring column.

With a little sympathy for the pitiful Wildcats, Brighton Coach Larry Mason began substituting after his squad leaped to an 11-2 lead in the first quarter.

Dave Lewallen led the scoring with 18, followed by Jim Johnson with 16.

The Wildcats, who have yet to see their school in the win column, were paced by Pat McAllen with 12 points.

SOUTHEASTERN CONFERENCE Standings as of Jan. 5

	W	L
Saline	5	0
Milan	4	1
Chelsea	3	2
South Lyon	3	2
Brighton	3	2
Dexter	1	4
Lincoln	1	4
Novi	0	5

*73 Wrestling Schedule

Jan. 10—Milan	Away
Jan. 17—Novi	Home
Jan. 19—Western Triple Dual	
Jan. 24—Dexter	Away
Jan. 31—Saline	Away
Feb. 7—Willow Run	
Feb. 16—League Meet at Saline	
Feb. 23—District Meet	

The team may also compete in the Schoolcraft Tournament, scheduled for Jan. 11-12; however, this has not yet been confirmed.

Four out of every 10 married women are working outside the home.

GIRI SCOUT NEWS



BROWNIE TROOP 169—

Our Brownie Troop No. 169 made friendship cards for the people at the Methodist Home. We also sang songs.

Jody Lucas, scribe.

TROOP 442—

Girl scout troop 442 exchanged Christmas ornaments with our sister troop, Troop 69, because our Christmas party was postponed. It was nice of the people to let us meet in the Municipal Building when we were locked out of the church. We practiced songs for our program at the Methodist Home next week.

Allison Clemes, scribe.

Young Men - Age 18

Be sure to REGISTER WITH SELECTIVE SERVICE

Room 210, First National Bldg.
210 S. Main, Ann Arbor
Phone 665-3766

January Specials!

L & R RESTAURANT

(LITTLE ROOSTER RESTAURANT)

PHONE 426-8668

11485 NORTH TERRITORIAL ROAD

THURSDAY - 5 to 9 p.m.

SPAGHETTI DINNER

All You Can Eat - \$1.85 per person

FRIDAY - 5 to 9 p.m.

OCEAN PERCH DINNER

All the perch you can eat

\$2.10 per person

In addition to our regular menu we are now serving our own

HOME-MADE PIZZAS After 5 p.m.

NEW HOURS: Closed Mondays; Tues., Wed., Thurs. 4-10 p.m.; Fri., Sat., 11 a.m.-10 p.m.; Sun., 11 a.m.-9 p.m.

DEATHS

Mrs. E. E. Koebbe

Chelsea Native Dies Saturday in Nebraska

Mrs. E. E. (Ethel) Koebbe of Columbus, Neb., died Saturday, Jan. 5, in Columbus.

Born in Chelsea, she was the daughter of Orrin and Angie Danner Burkhardt. She married Dr. E. E. Koebbe Sept. 4, 1917. She lived in Columbus for 52 years, where she was active in the Red Cross. She was also a life member of the Olive Chapter of the Eastern Star of Chelsea.

Her husband preceded her in death on Jan. 21, 1962, as did daughter, Mary Catherine, in 1956.

She is survived by one grandson Robert Hester of Upper Montclair, N.J.; one son-in-law, Dr. H. C. Hester of Upper Montclair; one sister Mrs. Elmer (Cora) Winans of Chelsea; and several nieces and nephews.

Funeral services were conducted Tuesday, Jan. 8, at the Staffan Funeral Home at 11 a.m. The Rev. Clive H. Dickins officiated. Burial followed in Mt. Olivet Cemetery.

Philip H. Atkinson

Former Area Resident

Dies Jan. 1 at Rawsonville

Philip H. Atkinson, former area resident, died at home in Rawsonville, Tuesday, Jan. 1.

Born Aug. 3, 1921, he was the son of Daniel and Florence Golding Atkinson.

He enlisted in the United States Marines and served in World War member of AMVETS and also a charter member of the Rawsonville Lions Club.

In 1960, he married Jeannette Potvin, who survives.

Other survivors include a son, John, a daughter, Kathleen, three brothers, George E. of Chelsea, Garnet of Traverse City, and Caarlisle of Stockbridge, one sister, Mrs. Edward (Edith) Sullivan of Garden City; and several nieces and nephews.

Funeral services were conducted from Holy Trinity Student Chapel on the Eastern Michigan University campus in Ypsilanti. Burial followed in St. John's Cemetery in Ypsilanti.

Mrs. Henry Lewis

Dies at Area Nursing Home Following Extended Illness

Mrs. Maggie E. Lewis, 63, of 13421 Trinkle Rd., died Jan. 5 at Cedar Knoll Nursing Home, Grass Lake, after an extended illness.

Born Aug. 20, 1910 in Salyersville, Ky., she was a daughter of John and Cornelious Howard Elam. She married Henry Lewis in 1927. He died in 1969.

Surviving are two daughters, Mrs. Marvin (Mary Eileen) Salyer of Chelsea, Mrs. Thomas (Clara Madge) Sott of Huntington, W. Va., two sons, John Lewis of Deland, Fla., and Henry J. Lewis of Gary, Ind., and 19 grandchildren.

Other survivors include four brothers, Benjamin Elam of Naples, Fla., Albert Elam of Abilene, Tex., William Elam of Roylton, Ky., and Edgar Elam of Michigan City, Ind., two sisters, Mrs. Mary Williams of Knox, Ind., and Mrs. Raymond (Maude) Forrester of Michigan City, Ind., several nieces and nephews. She was preceded in death by a son, Paul Lewis, in 1972, and two grandsons, Jerry Lewis and Keith Salyer, also in 1972.

Funeral services were held at 1 p.m. Wednesday, Jan. 9 at the Burghardt Funeral Home with the Rev. Clive H. Dickins officiating. Burial followed in Oak Grove Cemetery.

Re-Elected Presiding

Judge for District Court

At a meeting of the judges of the 14th District this week, Judge Henry Arkison was re-elected for the coming year as presiding judge of 14th District Court. The other two judges of the District are Thomas F. Shea and Robert V. Fink.

Wirt G. Ives

Dies Jan. 2 at Age 91 In Tucson Nursing Home

Wirt G. Ives, 91, died Wednesday, Jan. 2, at Forrester's Old Pueblo Casita Nursing Home in Tucson, Ariz., after a long illness.

Born March 30, 1882 on the Ives farm near Unadilla, he was the son of Homer G. Ives and Katherine (Katie) Godfrey Ives. He and his brother, Roy C. Ives, operated a dairy farm at what is known as the Scripper farm on Cavanaugh Lake Rd. prior to 1916. After living in Owosso for five years, he and his family returned to Chelsea in 1921 to live for many years with his father-in-law and mother-in-law, Mr. and Mrs. William Laverock, on N. McKinley Rd.

Mr. Ives was well-known in the community surrounding Chelsea as a leader in the First United Methodist church and a member of the Grange.

From 1921 to 1942, he was an employee of Chelsea Milling Co., operating the grain elevator from 1921 to 1942, when he and his wife, the former Fannie Laverock, moved to Tucson. He was employed as a custodian in an elementary school there until his retirement, and after retirement worked as a guard at a school crossing.

Preceding him in death were his wife, Fannie, in 1960 in Tucson, and two children, Gladys and Harold, who died in infancy.

He is survived by two sons, Roy G. of Tucson, and Hubert L. of San Mateo, Calif.; four grandchildren and five great-grandchildren; two sisters, Mrs. Edwin Gaunt and Miss Florence Ives, both of Chelsea; and a niece and several nephews.

Communications may be addressed to his son, Roy G. Ives, at 1911 E. Hawthorne St., Tucson, Ariz. 85719.

Intramural Basketball Underway

For at least 120 students at Beach Middle school, Wednesdays are days for "the big game"—or maybe not so big. At any rate, all of them are participating in an intramural basketball league at the school.

For the first time this year, the intramural program is a school-supported function, boasting four coaches—Joseph Beard, Tom Neumeyer, Jim Tichnor, and Charles Waller—and a director, Pat Clarke.

Participants began their season action with three practices, starting Dec. 5, and launched their six-game schedule this week. The 12 teams are divided into three divisions—eastern, western, and girls—and will cap the season with a play-off tournament for both boys and girls.

In the first week of action, completed last week, high scorers include Joe Ewald with 23 points; Greg Ringe, 18; Don Aldrich, 12; Sue Heydlauff, 12; Steve Dresch, 10; Shelley Warren, 10; Steve Check, 10; Todd Headrick, 10; and Cindy Welshans, nine.

BEACH INTRAMURALS

EASTERN DIVISION

Standings as of Jan. 2

	W	L
Huston team	1	0
Owings team	1	0
Lewis team	0	1

WESTERN DIVISION

	W	L
Dresch team	1	0
Headrick team	1	0
Aldrich team	0	1
Welshans team	0	1

GIRLS DIVISION

	W	L
Simon team	1	0
Robbins team	1	0
Heydlauff team	0	1
Hutting team	0	1

INTRAMURAL SCORES

Games of Jan. 2

Huston 19, Lewis 18
Owings 30, Powell 14
Dresch 25, Aldrich 22
Headrick 41, Welshans 23
Robbins 25, Hutting 21



THIRD PLACE behind two Class A schools is where these five wrestlers helped place Chelsea's squad last week in the Parma Western Tournament. Honors were earned by, in front, from left, John Beeman, who recorded a first place at 119 pounds, and Dale Poertner, who placed third at 132 pounds.

In back, from left, Dennis Bauer placed third at 155 pounds, Mike Agopian took first at 126 pounds, and Nick Keiser managed a second at 105 pounds. Both Beeman and Agopian defeated the number one and two wrestlers on their way to winning championships.

CHELSEA VILLAGE COUNCIL PROCEEDINGS

Regular Session. January 2, 1974

This meeting was called to order at 7:30 p.m. by President Fuls. Present: President Fuls, Administrator Weber, and Clerk Keezer. Trustees Present: Borton, Boylan, Dmoch, Johnson, Pennington, and Wood. Others Present: Police Chief Meranuck, Robert Kendall, Steve Janick, and Planning Commission Representative, Robert Schaeffer.

Motion by Dmoch, supported by

Wood, to adopt a resolution authorizing the Village President to enter into a maintenance cost agreement with the Michigan Department of State Highways. Roll call: Yeas—Borton, Boylan, Dmoch, Johnson, Pennington, and Wood. Nays—None. Motion carried.

Administrator Weber discussed

the Budget Report for the 3rd quarter. Thomas Dmoch was appointed Legislative Co-ordinator.

A discussion was held regarding

the Sanitary Landfill. Motion by Pennington, supported by Borton, to authorize payment of bills as submitted. Roll call: Yeas all. Motion carried. Meeting adjourned.

Loren Keezer, Village Clerk.

NOT VERY POPULAR

This guy I know doesn't think he's popular. Why, last month when he was sick for two weeks in the hospital, he only got one card. The card said: "Get Well Soon." It was from his health insurance company.

SAFER HIGHWAYS

When both the roads and drivers are dry, the roads are safer.

DEXTER LOCKER

DUNBAR MEATS

8083 MAIN ST.
DEXTER
426-84661431 E. MICHIGAN
YPSILANTI
483-7466

MEATS THAT ARE GOOD

Fill Your Freezer While Prices Are Low!

SIDES
76¢*HIND
89¢*FRONT
69¢*

CUSTOM SLAUGHTERING & PROCESSING

*Subject to cutting loss and processing cost.

WASHTENAW COMMUNITY COLLEGE

AND

CHELSEA PUBLIC SCHOOLS

CHELSEA EXTENSION

WINTER TERM 1974

Classes Begin: Monday, January 14, 1974

COURSE NO.	TITLE	CR.	SEC.	DAYS	HOURS	ROOM
122	Business Law	3	55	M	7:00-10 p.m.	111
222	Prin. of Economics	3	55	T	7:00-10 p.m.	111
097	Intro. Algebra	4	55	T	7:00-9 p.m.	112
				T	7:00-10 p.m.	
122	English Composition	3	55	W	7:00-10 p.m.	111
170	Intro. to Literature	3	55	M	7:00-10 p.m.	112
100	Intro. to Psychology	3	55	T	7:00-10 p.m.	113
120	Conv. French	2	55	W	7:00-10 p.m.	112
101	Western Civilization	3	55	M	7:00-10 p.m.	113
100	Prin. of Sociology	3	55	T	7:00-10 p.m.	111
150	State & Local Government	3	55	W	7:00-10 p.m.	113
200	Child Psychology	3	55	T	7:00-10 p.m.	112
091	Fund. of Accounting	3	55	T	7:00-10 p.m.	113

Fees: \$12.50 Per Credit Hour - \$10 Application Fee (for new students only)

REGISTRATION: 6:30-7:00 p.m. Each Evening Preceding Class.
Registration Also Accepted at Huron River Campus

For Further Information Call 971-6300 Extension 421 or 453

First Year Anniversary

OIL & FILTER CHANGE

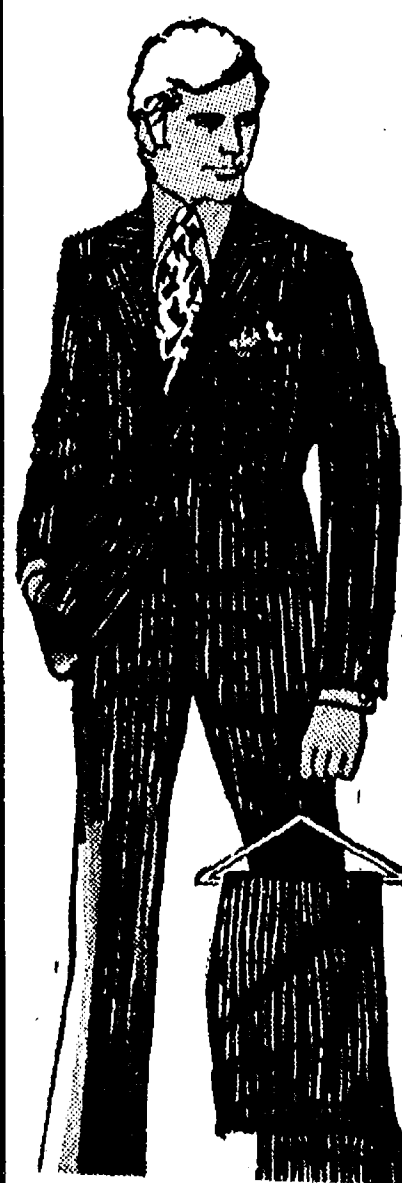
10W30 Mobil, Quaker State
or Pennzoil

Only \$6.95

GLENN'S MOBIL SERVICE

M-52 and I-94

Phone 475-1767



CLOTHING SALE

★ SUITS
★ SPORT COATS
★ PANTS
★ JACKETS

20% Off

FOSTER'S Men's Wear